

**Product Name: PDK1 (phospho Tyr9) Rabbit Polyclonal Antibody**  
**Catalog #: APRab05235**

---



## Summary

<b>Production Name</b>	PDK1 (phospho Tyr9) Rabbit Polyclonal Antibody
<b>Description</b>	Rabbit Polyclonal Antibody
<b>Host</b>	Rabbit
<b>Application</b>	IHC-P,IF-P,IF-F,ICC/IF,ELISA
<b>Reactivity</b>	Human,Mouse,Rat

## Performance

<b>Conjugation</b>	Unconjugated
<b>Modification</b>	Phospho Antibody
<b>Isotype</b>	IgG
<b>Clonality</b>	Polyclonal
<b>Form</b>	Liquid
<b>Storage</b>	Store at 4°C short term. Aliquot and store at -20°C long term. Avoid freeze/thaw cycles.
<b>Buffer</b>	Liquid in PBS containing 50% glycerol, 0.5% BSA and 0.02% New type preservative N.
<b>Purification</b>	Affinity purification

## Immunogen

<b>Gene Name</b>	PDPK1
<b>Alternative Names</b>	PDPK1; PDK1; 3-phosphoinositide-dependent protein kinase 1; hPDK1
<b>Gene ID</b>	5170.0
<b>SwissProt ID</b>	O15530.The antiserum was produced against synthesized peptide derived from human PDK1 around the phosphorylation site of Tyr9. AA range:1-50

## Application

<b>Dilution Ratio</b>	IHC-P 1:100-1:300, ELISA 1:40000, IF-P/IF-F/ICC/IF 1:50-200
<b>Molecular Weight</b>	

**Product Name: PDK1 (phospho Tyr9) Rabbit Polyclonal Antibody**  
**Catalog #: AP Rab05235**



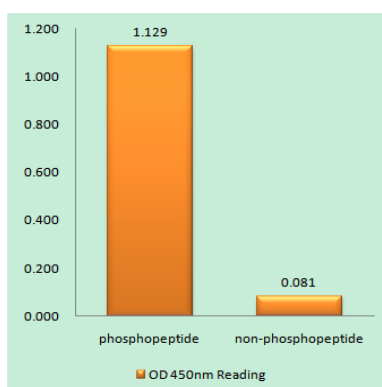
## Background

catalytic activity:ATP + a protein = ADP + a phosphoprotein.,function:Phosphorylates and activates not only PKB/AKT, but also PKA, PKC-zeta, RPS6KA1 and RPS6KB1. May play a general role in signaling processes and in development (By similarity). Isoform 3 is catalytically inactive.,PTM:Phosphorylated on tyrosine and serine/threonine. Phosphorylation on Ser-241 in the activation loop is required for full activity. PDK1 itself can autophosphorylate Ser-241, leading to its own activation.,similarity:Belongs to the protein kinase superfamily.,similarity:Belongs to the protein kinase superfamily. AGC Ser/Thr protein kinase family. PDK1 subfamily.,similarity:Contains 1 PH domain.,similarity:Contains 1 protein kinase domain.,subcellular location:Membrane-associated after cell stimulation leading to its translocation. Tyrosine phosphorylation seems to occur only at the plasma membrane.,subunit:Interacts with TUSC4.,tissue specificity:Appears to be expressed ubiquitously.,catalytic activity:ATP + a protein = ADP + a phosphoprotein.,function:Phosphorylates and activates not only PKB/AKT, but also PKA, PKC-zeta, RPS6KA1 and RPS6KB1. May play a general role in signaling processes and in development (By similarity). Isoform 3 is catalytically inactive.,PTM:Phosphorylated on tyrosine and serine/threonine. Phosphorylation on Ser-241 in the activation loop is required for full activity. PDK1 itself can autophosphorylate Ser-241, leading to its own activation.,similarity:Belongs to the protein kinase superfamily.,similarity:Belongs to the protein kinase superfamily. AGC Ser/Thr protein kinase family. PDK1 subfamily.,similarity:Contains 1 PH domain.,similarity:Contains 1 protein kinase domain.,subcellular location:Membrane-associated after cell stimulation leading to its translocation. Tyrosine phosphorylation seems to occur only at the plasma membrane.,subunit:Interacts with TUSC4.,tissue specificity:Appears to be expressed ubiquitously.,

## Research Area

Akt\_PKB;PPAR;mTOR;Focal adhesion;Insulin\_Receptor;Aldosterone-regulated sodium reabsorption;Endometrial cancer;Prostate cancer;Non-small cell lung cancer;

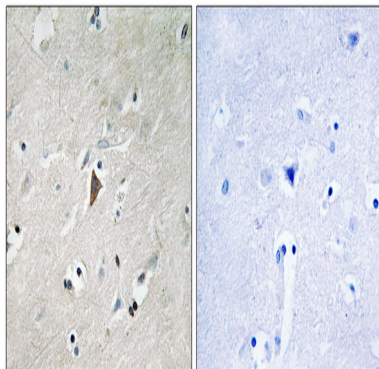
## Image Data



Enzyme-Linked Immunosorbent Assay (Phospho-ELISA) for Immunogen Phosphopeptide (Phospho-left) and Non-Phosphopeptide (Phospho-right) , using PDK1 (Phospho-Tyr9) Antibody

**Product Name: PDK1 (phospho Tyr9) Rabbit Polyclonal Antibody**  
**Catalog #: APRab05235**

---



Immunohistochemistry analysis of paraffin-embedded human brain, using PDK1 (Phospho-Tyr9) Antibody. The picture on the right is blocked with the phospho peptide.

### **Note**

For research use only.