

**Product Name: OSR1 (phospho Thr185) Rabbit Polyclonal Antibody**  
**Catalog #: APRab05138**

---

## Summary

<b>Production Name</b>	OSR1 (phospho Thr185) Rabbit Polyclonal Antibody
<b>Description</b>	Rabbit Polyclonal Antibody
<b>Host</b>	Rabbit
<b>Application</b>	WB,IHC-P,IF-P,IF-F,ICC/IF,ELISA
<b>Reactivity</b>	Human,Mouse

## Performance

<b>Conjugation</b>	Unconjugated
<b>Modification</b>	Phospho Antibody
<b>Isotype</b>	IgG
<b>Clonality</b>	Polyclonal
<b>Form</b>	Liquid
<b>Storage</b>	Store at 4°C short term. Aliquot and store at -20°C long term. Avoid freeze/thaw cycles.
<b>Buffer</b>	Liquid in PBS containing 50% glycerol, 0.5% BSA and 0.02% New type preservative N.
<b>Purification</b>	Affinity purification

## Immunogen

<b>Gene Name</b>	OXSR1
<b>Alternative Names</b>	OXSR1; KIAA1101; OSR1; Serine/threonine-protein kinase OSR1; Oxidative stress-responsive 1 protein
<b>Gene ID</b>	9943.0
<b>SwissProt ID</b>	O95747.The antiserum was produced against synthesized peptide derived from human OSR1 around the phosphorylation site of Thr185. AA range:151-200

## Application

<b>Dilution Ratio</b>	WB 1:500-1:2000, IHC-P 1:100-1:300, ELISA 1:10000, IF-P/IF-F/ICC/IF 1:50-200
<b>Molecular Weight</b>	65kDa

**Product Name: OSR1 (phospho Thr185) Rabbit  
Polyclonal Antibody  
Catalog #: APRab05138**

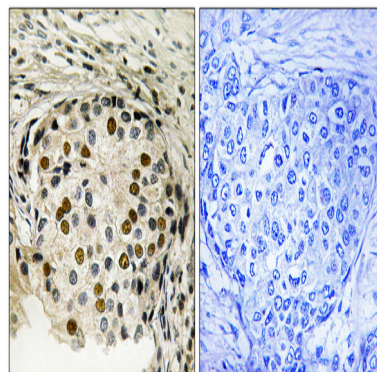
---

## Background

The product of this gene belongs to the Ser/Thr protein kinase family of proteins. It regulates downstream kinases in response to environmental stress, and may play a role in regulating the actin cytoskeleton. [provided by RefSeq, Jul 2008],catalytic activity:ATP + a protein = ADP + a phosphoprotein.,cofactor:Magnesium.,enzyme regulation:By autophosphorylation on threonine.,function:Regulates downstream kinases in response to environmental stress. May also have a function in regulating the actin cytoskeleton.,PTM:Phosphorylated upon DNA damage, probably by ATM or ATR.,similarity:Belongs to the protein kinase superfamily. STE Ser/Thr protein kinase family. STE20 subfamily.,similarity:Contains 1 protein kinase domain.,subunit:Binds to and phosphorylates PAK1. Interacts with chloride channel proteins SLC12A6 isoform 2, SLC12A1 and SLC12A2 but not with SLC12A4 and SLC12A7, possibly establishing sensor/signaling modules that initiate the cellular response to environmental stress. Binds to and phosphorylates RELL1, RELL2 AND RELT.,tissue specificity:Ubiquitously expressed in all tissue examined.,

## Research Area

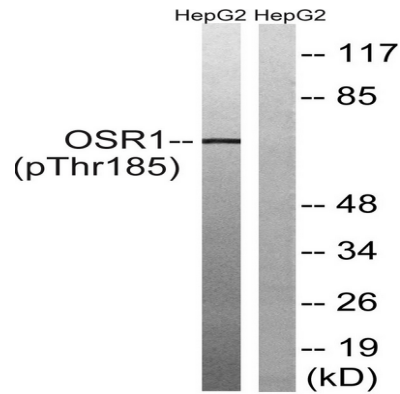
## Image Data



Immunohistochemistry analysis of paraffin-embedded human breast carcinoma, using OSR1 (Phospho-Thr185) Antibody.  
The picture on the right is blocked with the phospho peptide.

**Product Name: OSR1 (phospho Thr185) Rabbit  
Polyclonal Antibody  
Catalog #: APRab05138**

---



Western blot analysis of lysates from HepG2 cells treated with serum 20% 15', using OSR1 (Phospho-Thr185) Antibody.  
The lane on the right is blocked with the phospho peptide.

### Note

For research use only.