

**Product Name:** Lyn (phospho Tyr508) Rabbit Polyclonal Antibody  
**Catalog #:** APRab04963

---

## Summary

<b>Production Name</b>	Lyn (phospho Tyr508) Rabbit Polyclonal Antibody
<b>Description</b>	Rabbit Polyclonal Antibody
<b>Host</b>	Rabbit
<b>Application</b>	WB,IHC-P,IF-P,IF-F,ICC/IF,ELISA
<b>Reactivity</b>	Human,Mouse,Rat

## Performance

<b>Conjugation</b>	Unconjugated
<b>Modification</b>	Phospho Antibody
<b>Isotype</b>	IgG
<b>Clonality</b>	Polyclonal
<b>Form</b>	Liquid
<b>Storage</b>	Store at 4°C short term. Aliquot and store at -20°C long term. Avoid freeze/thaw cycles.
<b>Buffer</b>	Liquid in PBS containing 50% glycerol, 0.5% BSA and 0.02% New type preservative N.
<b>Purification</b>	Affinity purification

## Immunogen

<b>Gene Name</b>	LYN
<b>Alternative Names</b>	LYN; JTK8; Tyrosine-protein kinase Lyn; Lck/Yes-related novel protein tyrosine kinase; V-yes-1 Yamaguchi sarcoma viral related oncogene homolog; p53Lyn; p56Lyn
<b>Gene ID</b>	4067.0
<b>SwissProt ID</b>	P07948.The antiserum was produced against synthesized peptide derived from human Lyn around the phosphorylation site of Tyr507. AA range:463-512

## Application

<b>Dilution Ratio</b>	WB 1:500-1:2000, IHC-P 1:100-1:300, ELISA 1:10000, IF-P/IF-F/ICC/IF 1:50-200
<b>Molecular Weight</b>	53,56kDa

**Product Name: Lyn (phospho Tyr508) Rabbit Polyclonal Antibody**  
**Catalog #: APRab04963**

---

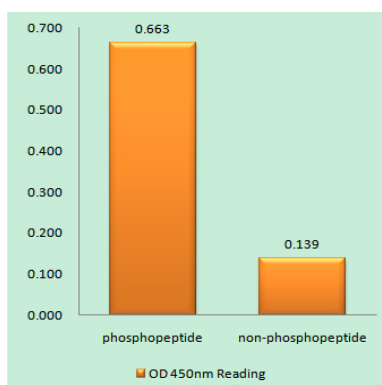
## Background

This gene encodes a tyrosine protein kinase, which maybe involved in the regulation of mast cell degranulation, and erythroid differentiation. Alternatively spliced transcript variants encoding different isoforms have been found for this gene. [provided by RefSeq, Jul 2011],catalytic activity:ATP + a [protein]-L-tyrosine = ADP + a [protein]-L-tyrosine phosphate.,similarity:Belongs to the protein kinase superfamily. Tyr protein kinase family.,similarity:Belongs to the protein kinase superfamily. Tyr protein kinase family. SRC subfamily.,similarity:Contains 1 protein kinase domain.,similarity:Contains 1 SH2 domain.,similarity:Contains 1 SH3 domain.,subunit:Interacts with phosphorylated LIME1 and with CD79A upon BCR activation. Interacts with Epstein-Barr virus LMP2A. Interacts with TGFB1I1. Interaction, via the SH2 and SH3, domains with MUC1 is stimulated by IL7 and, the subsequent phosphorylation increases the binding between MUC1 and CTNNB1/beta-catenin. Interacts with PPP1R15A via the SH3 domain.,tissue specificity:Expressed in primary neuroblastoma tumors.,

## Research Area

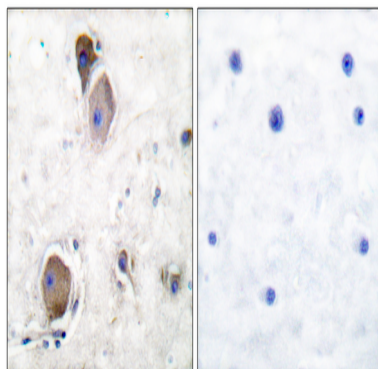
Chemokine;B\_Cell\_Antigen;Fc epsilon RI;Fc gamma R-mediated phagocytosis;Long-term depression;Epithelial cell signaling in Helicobacter pylori infection;

## Image Data

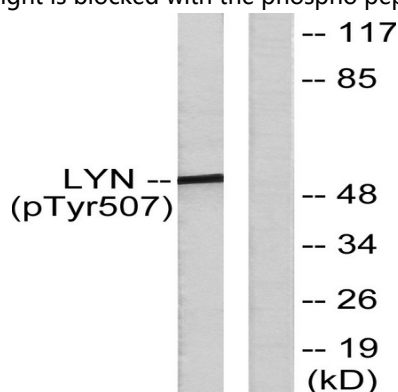


Enzyme-Linked Immunosorbent Assay (Phospho-ELISA) for Immunogen Phosphopeptide (Phospho-left) and Non-Phosphopeptide (Phospho-right) , using Lyn (Phospho-Tyr507) Antibody

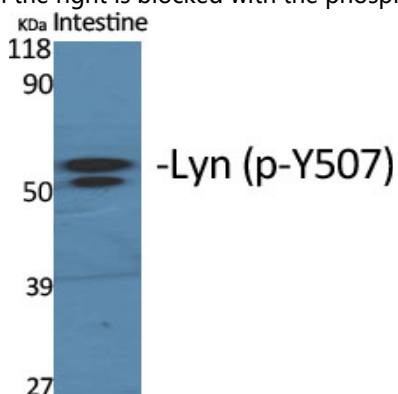
**Product Name: Lyn (phospho Tyr508) Rabbit Polyclonal Antibody**  
**Catalog #: APRab04963**



Immunohistochemistry analysis of paraffin-embedded human brain, using Lyn (Phospho-Tyr507) Antibody. The picture on the right is blocked with the phospho peptide.



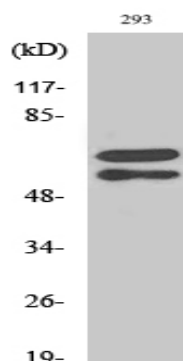
Western blot analysis of lysates from K562 cells treated with H<sub>2</sub>O<sub>2</sub> 100uM 30', using Lyn (Phospho-Tyr507) Antibody. The lane on the right is blocked with the phospho peptide.



Western Blot analysis of various cells using Phospho-Lyn (Y508) Polyclonal Antibody diluted at 1: 1000

**Product Name: Lyn (phospho Tyr508) Rabbit Polyclonal Antibody**  
**Catalog #: APRab04963**

---



Western Blot analysis of 293 cells using Phospho-Lyn (Y508) Polyclonal Antibody diluted at 1: 1000

### **Note**

For research use only.