

Product Name: Lck (phospho Tyr505) Rabbit Polyclonal Antibody
Catalog #: APRab04946

Summary

Production Name	Lck (phospho Tyr505) Rabbit Polyclonal Antibody
Description	Rabbit Polyclonal Antibody
Host	Rabbit
Application	WB,IHC-P,IF-P,IF-F,ICC/IF,ELISA
Reactivity	Human,Mouse,Rat

Performance

Conjugation	Unconjugated
Modification	Phospho Antibody
Isotype	IgG
Clonality	Polyclonal
Form	Liquid
Storage	Store at 4°C short term. Aliquot and store at -20°C long term. Avoid freeze/thaw cycles.
Buffer	Liquid in PBS containing 50% glycerol, 0.5% BSA and 0.02% New type preservative N.
Purification	Affinity purification

Immunogen

Gene Name	LCK LCK; Tyrosine-protein kinase Lck; Leukocyte C-terminal Src kinase; LSK; Lymphocyte cell-specific protein-tyrosine kinase; Protein YT16; Proto-oncogene Lck; T cell-specific protein-tyrosine kinase; p56-LCK
Alternative Names	
Gene ID	3932.0
SwissProt ID	P06239.The antiserum was produced against synthesized peptide derived from human Lck around the phosphorylation site of Tyr505. AA range:460-509

Application

Dilution Ratio	WB 1:500-1:2000, IHC-P 1:100-1:300, ELISA 1:40000, IF-P/IF-F/ICC/IF 1:50-200
Molecular Weight	56kDa

Product Name: Lck (phospho Tyr505) Rabbit Polyclonal Antibody
Catalog #: APRab04946

Background

This gene is a member of the Src family of protein tyrosine kinases (PTKs). The encoded protein is a key signaling molecule in the selection and maturation of developing T-cells. It contains N-terminal sites for myristylation and palmitoylation, a PTK domain, and SH2 and SH3 domains which are involved in mediating protein-protein interactions with phosphotyrosine-containing and proline-rich motifs, respectively. The protein localizes to the plasma membrane and pericentrosomal vesicles, and binds to cell surface receptors, including CD4 and CD8, and other signaling molecules. Multiple alternatively spliced variants encoding different isoforms have been described. [provided by RefSeq, Aug 2016], catalytic activity: ATP + a [protein]-L-tyrosine = ADP + a [protein]-L-tyrosine phosphate., disease: A chromosomal aberration involving LCK is found in leukemias. Translocation t(1;7)(p34;q34) with TCRB., domain: The SH2 domain mediates interaction with SQSTM1. Interaction is regulated by Ser-59 phosphorylation., enzyme regulation: Inhibited by tyrosine phosphorylation., function: Tyrosine kinase that plays an essential role for the selection and maturation of developing T-cell in the thymus and in mature T-cell function. Is constitutively associated with the cytoplasmic portions of the CD4 and CD8 surface receptors and plays a key role in T-cell antigen receptor (TCR)-linked signal transduction pathways. Association of the TCR with a peptide antigen-bound MHC complex facilitates the interaction of CD4 and CD8 with MHC class II and class I molecules, respectively, and thereby recruits the associated LCK to the vicinity of the TCR/CD3 complex. LCK then phosphorylates tyrosines residues within the immunoreceptor tyrosines-based activation motifs (ITAMs) in the cytoplasmic tails of the TCR gamma chains and CD3 subunits, initiating the TCR/CD3 signaling pathway. In addition, contributes to signaling by other receptor molecules. Associates directly with the cytoplasmic tail of CD2, and upon engagement of the CD2 molecule, LCK undergoes hyperphosphorylation and activation. Also plays a role in the IL2 receptor-linked signaling pathway that controls T-cell proliferative response. Binding of IL2 to its receptor results in increased activity of LCK. Is expressed at all stages of thymocyte development and is required for the regulation of maturation events that are governed by both pre-TCR and mature alpha beta TCR., mass spectrometry: PubMed:11840567, online information: Lck entry, PTM: Phosphorylated on Tyr-394, which increases enzymatic activity (By similarity). Phosphorylated on Tyr-505, which decreases activity., similarity: Belongs to the protein kinase superfamily. Tyr protein kinase family. SRC subfamily., similarity: Contains 1 protein kinase domain., similarity: Contains 1 SH2 domain., similarity: Contains 1 SH3 domain., subcellular location: Present in lipid rafts in an inactive form., subunit: Binds to the cytoplasmic domain of cell surface receptors, such as CD2, CD4, CD5, CD8, CD44, CD45 and CD122. Also binds to effector molecules, such as PI4K, VAV1, RASA1, FYB and to other protein kinases including CDC2, RAF1, ZAP70 and SYK. Binds to phosphatidylinositol 3'-kinase (PI3K) from T-lymphocytes through its SH3 domain and to the tyrosine phosphorylated form of KHDRBS1/p70 through its SH2 domain. Binds to HIV-1 Nef through its SH3 domain. This interaction inhibits its tyrosine-kinase activity. Interacts with SQSTM1. Interacts with phosphorylated LIME1. Interacts with CBLB and PTPRH., tissue specificity: Expressed specifically in lymphoid cells.,

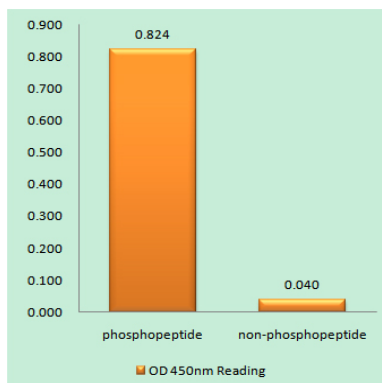
Product Name: Lck (phospho Tyr505) Rabbit Polyclonal Antibody
Catalog #: APRab04946



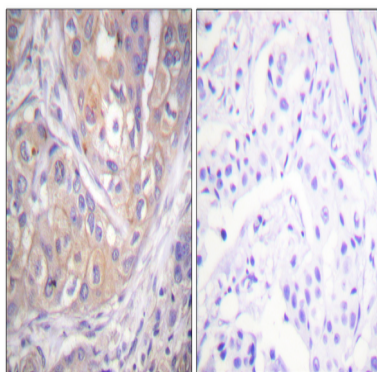
Research Area

Natural killer cell mediated cytotoxicity; T_Cell_Receptor; Primary immunodeficiency;

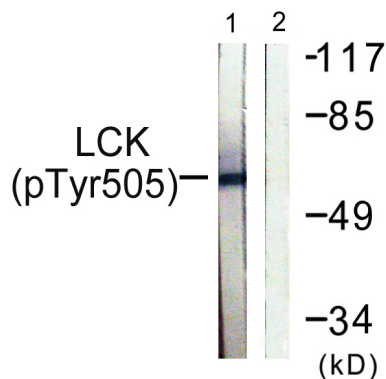
Image Data



Enzyme-Linked Immunosorbent Assay (Phospho-ELISA) for Immunogen Phosphopeptide (Phospho-left) and Non-Phosphopeptide (Phospho-right), using Lck (Phospho-Tyr505) Antibody



Immunohistochemistry analysis of paraffin-embedded human breast carcinoma, using Lck (Phospho-Tyr505) Antibody. The picture on the right is blocked with the phospho peptide.



Western blot analysis of lysates from Jurkat cells, using Lck (Phospho-Tyr505) Antibody. The lane on the right is blocked with the phospho peptide.



Product Name: Lck (phospho Tyr505) Rabbit Polyclonal
Antibody
Catalog #: APRab04946

Note

For research use only.