

**Product Name: KIF20A (phospho Ser528) Rabbit Polyclonal Antibody**  
**Catalog #: APRab04919**

---

## Summary

<b>Production Name</b>	KIF20A (phospho Ser528) Rabbit Polyclonal Antibody
<b>Description</b>	Rabbit Polyclonal Antibody
<b>Host</b>	Rabbit
<b>Application</b>	WB,IHC-P,IF-P,IF-F,ICC/IF,ELISA
<b>Reactivity</b>	Human,Rat,Mouse

## Performance

<b>Conjugation</b>	Unconjugated
<b>Modification</b>	Phospho Antibody
<b>Isotype</b>	IgG
<b>Clonality</b>	Polyclonal
<b>Form</b>	Liquid
<b>Storage</b>	Store at 4°C short term. Aliquot and store at -20°C long term. Avoid freeze/thaw cycles.
<b>Buffer</b>	Liquid in PBS containing 50% glycerol, 0.5% BSA and 0.02% New type preservative N.
<b>Purification</b>	Affinity purification

## Immunogen

<b>Gene Name</b>	KIF20A
<b>Alternative Names</b>	KIF20A; MKLP2; RAB6KIFL; Kinesin-like protein KIF20A; GG10_2; Mitotic kinesin-like protein 2; MKlp2; Rab6-interacting kinesin-like protein; Rabkinesin-6
<b>Gene ID</b>	10112.0
<b>SwissProt ID</b>	O95235.The antiserum was produced against synthesized peptide derived from human KIF20A around the phosphorylation site of Ser528. AA range:501-550

## Application

<b>Dilution Ratio</b>	WB 1:500-1:2000, IHC-P 1:100-1:300, ELISA 1:5000, IF-P/IF-F/ICC/IF 1:50-200
<b>Molecular Weight</b>	100kDa

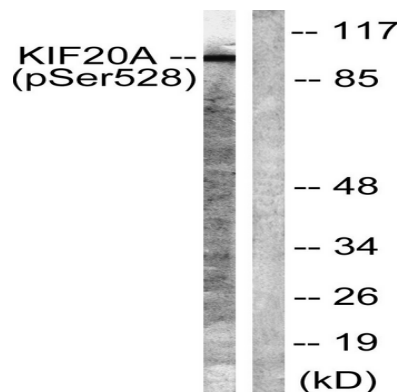
**Product Name: KIF20A (phospho Ser528) Rabbit Polyclonal Antibody**  
**Catalog #: AP Rab04919**

## Background

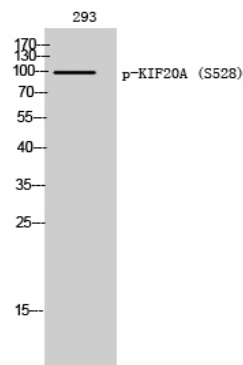
function: Interacts with guanosine triphosphate (GTP)-bound forms of RAB6A and RAB6B. May act as a motor required for the retrograde RAB6 regulated transport of Golgi membranes and associated vesicles along microtubules. Has a microtubule plus end-directed motility., similarity: Belongs to the kinesin-like protein family., similarity: Contains 1 kinesin-motor domain., function: Interacts with guanosine triphosphate (GTP)-bound forms of RAB6A and RAB6B. May act as a motor required for the retrograde RAB6 regulated transport of Golgi membranes and associated vesicles along microtubules. Has a microtubule plus end-directed motility., similarity: Belongs to the kinesin-like protein family., similarity: Contains 1 kinesin-motor domain.,

## Research Area

## Image Data



Western blot analysis of lysates from 293 cells, using KIF20A (Phospho-Ser528) Antibody. The lane on the right is blocked with the phospho peptide.



Western Blot analysis of 293 cells using Phospho-KIF20A (S528) Polyclonal Antibody



**Product Name: KIF20A (phospho Ser528) Rabbit  
Polyclonal Antibody  
Catalog #: APRab04919**

---

**Note**

For research use only.