

Product Name: ICAM-1 (phospho Tyr512) Rabbit Polyclonal Antibody
Catalog #: APRab04812

Summary

Production Name	ICAM-1 (phospho Tyr512) Rabbit Polyclonal Antibody
Description	Rabbit Polyclonal Antibody
Host	Rabbit
Application	WB,ELISA
Reactivity	Human,Rat,Mouse

Performance

Conjugation	Unconjugated
Modification	Phospho Antibody
Isotype	IgG
Clonality	Polyclonal
Form	Liquid
Storage	Store at 4°C short term. Aliquot and store at -20°C long term. Avoid freeze/thaw cycles.
Buffer	Liquid in PBS containing 50% glycerol, 0.5% BSA and 0.02% New type preservative N.
Purification	Affinity purification

Immunogen

Gene Name	ICAM1
Alternative Names	ICAM1; Intercellular adhesion molecule 1; ICAM-1; Major group rhinovirus receptor; CD antigen CD54
Gene ID	3383.0
SwissProt ID	P05362.The antiserum was produced against synthesized peptide derived from human ICAM-1 around the phosphorylation site of Tyr512. AA range:479-528

Application

Dilution Ratio	WB 1:500-1:2000, ELISA 1:40000.Not yet tested in other applications.
Molecular Weight	57kDa

Product Name: ICAM-1 (phospho Tyr512) Rabbit Polyclonal Antibody
Catalog #: APRab04812

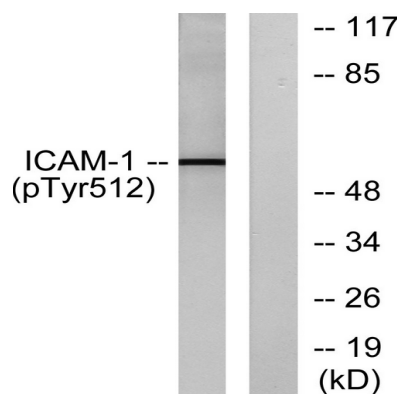
Background

This gene encodes a cell surface glycoprotein which is typically expressed on endothelial cells and cells of the immune system. It binds to integrins of type CD11a / CD18, or CD11b / CD18 and is also exploited by Rhinovirus as a receptor. [provided by RefSeq, Jul 2008],function:ICAM proteins are ligands for the leukocyte adhesion protein LFA-1 (integrin alpha-L/beta-2). During leukocyte trans-endothelial migration, ICAM1 engagement promotes the assembly of endothelial apical cups through SGEF and RHOG activation. In case of rhinovirus infection acts as a cellular receptor for the virus.,online information:ICAM-1,online information:Icosahedral capsid structure,online information:Intercellular adhesion molecule entry,polymorphism:Homozygotes with ICAM1-Kalifi Met-56 seem to have an increased risk for cerebral malaria.,PTM:Monoubiquitinated, which is promoted by MARCH9 and leads to endocytosis.,similarity:Belongs to the immunoglobulin superfamily. ICAM family.,similarity:Contains 5 Ig-like C2-type (immunoglobulin-like) domains.,subunit:Homodimer (Probable). Interacts with human herpesvirus 8 MIR2 protein (Probable). Interacts with MUC1 and promotes cell aggregation in epithelial cells. Interacts with SGEF. Binds to coxsackievirus A21 capsid proteins and acts as a receptor for this virus.,

Research Area

Cell adhesion molecules (CAMs);Natural killer cell mediated cytotoxicity;Leukocyte transendothelial migration;Viral myocarditis;

Image Data



Western blot analysis of lysates from HeLa cells treated with TNF-alpha 20ng/ml 5', using ICAM-1 (Phospho-Tyr512) Antibody. The lane on the right is blocked with the phospho peptide.

**Product Name: ICAM-1 (phospho Tyr512) Rabbit
Polyclonal Antibody
Catalog #: APRab04812**



Western Blot analysis of various cells using Phospho-ICAM-1 (Y512) Polyclonal Antibody diluted at 1: 500

Note

For research use only.