

Product Name: GRB10 (phospho Tyr67) Rabbit Polyclonal Antibody
Catalog #: APRab04743

Summary

Production Name	GRB10 (phospho Tyr67) Rabbit Polyclonal Antibody
Description	Rabbit Polyclonal Antibody
Host	Rabbit
Application	WB,IHC-P,IF-P,IF-F,ICC/IF,ELISA
Reactivity	Human,Rat,Mouse

Performance

Conjugation	Unconjugated
Modification	Phospho Antibody
Isotype	IgG
Clonality	Polyclonal
Form	Liquid
Storage	Store at 4°C short term. Aliquot and store at -20°C long term. Avoid freeze/thaw cycles.
Buffer	Liquid in PBS containing 50% glycerol, 0.5% BSA and 0.02% New type preservative N.
Purification	Affinity purification

Immunogen

Gene Name	GRB10
Alternative Names	GRB10; GRBIR; KIAA0207; Growth factor receptor-bound protein 10; GRB10 adapter protein; Insulin receptor-binding protein Grb-IR
Gene ID	2887.0
SwissProt ID	Q13322.The antiserum was produced against synthesized peptide derived from human GRB10 around the phosphorylation site of Tyr67. AA range:33-82

Application

Dilution Ratio	WB 1:500-1:2000, IHC-P 1:100-1:300, IF-P/IF-F/ICC/IF 1:200-1:1000, ELISA 1:20000.Not yet tested in other applications.
-----------------------	--

Product Name: GRB10 (phospho Tyr67) Rabbit Polyclonal Antibody
Catalog #: APRab04743

Molecular Weight 67kDa

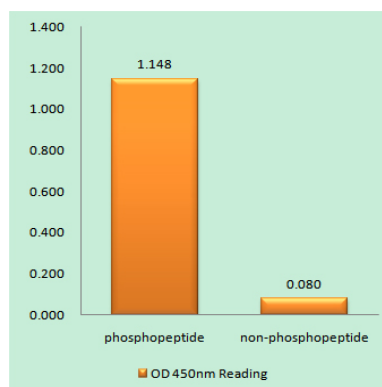
Background

The product of this gene belongs to a small family of adapter proteins that are known to interact with a number of receptor tyrosine kinases and signaling molecules. This gene encodes a growth factor receptor-binding protein that interacts with insulin receptors and insulin-like growth-factor receptors. Overexpression of some isoforms of the encoded protein inhibits tyrosine kinase activity and results in growth suppression. This gene is imprinted in a highly isoform- and tissue-specific manner, with expression observed from the paternal allele in the brain, and from the maternal allele in the placental trophoblasts. Alternatively spliced transcript variants encoding different isoforms have been identified. [provided by RefSeq, Oct 2010],alternative products:Additional isoforms seem to exist,function:Plays a functional role in insulin and IGF-I signaling. May serve to positively link the insulin and IGF-I receptors to an uncharacterized mitogenic signaling pathway. Interacts with the cytoplasmic domain of the autophosphorylated insulin receptor which is then inhibited. The interaction is mediated by the SH2 domain. Also binds activated platelet-derived growth factor receptor and epidermal growth factor receptor.,similarity:Belongs to the GRB7/10/14 family.,similarity:Contains 1 PH domain.,similarity:Contains 1 Ras-associating domain.,similarity:Contains 1 SH2 domain.,subunit:Interacts with GIGYF1/PERQ1 and GIGYF2/TNRC15.,tissue specificity:Highly expressed in skeletal muscle.,

Research Area

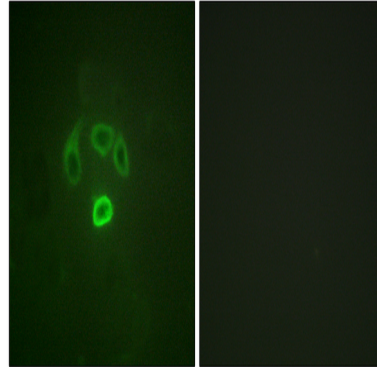
Stem cell pathway; Insulin Receptor

Image Data

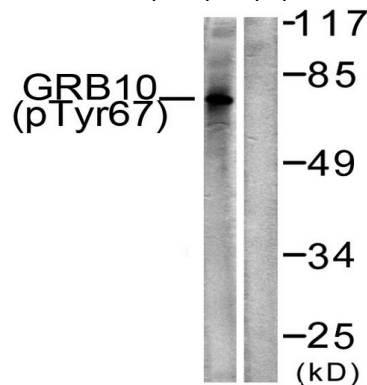


Enzyme-Linked Immunosorbent Assay (Phospho-ELISA) for Immunogen Phosphopeptide (Phospho-left) and Non-Phosphopeptide (Phospho-right) , using GRB10 (Phospho-Tyr67) Antibody

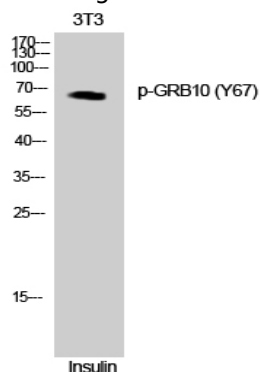
Product Name: GRB10 (phospho Tyr67) Rabbit Polyclonal Antibody
Catalog #: AP Rab04743



Immunofluorescence analysis of HepG2 cells, using GRB10 (Phospho-Tyr67) Antibody. The picture on the right is blocked with the phospho peptide.

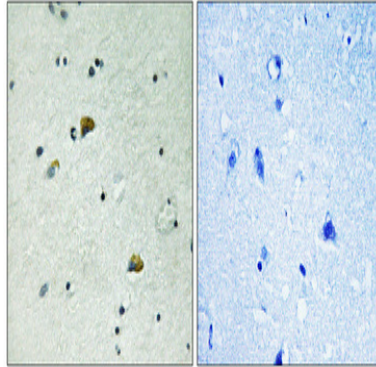


Western blot analysis of lysates from NIH/3T3 cells treated with Insulin 0.01U/ml 15', using GRB10 (Phospho-Tyr67) Antibody. The lane on the right is blocked with the phospho peptide.



Western Blot analysis of COLO cells using Phospho-GRB10 (Y67) Polyclonal Antibody

**Product Name: GRB10 (phospho Tyr67) Rabbit
Polyclonal Antibody
Catalog #: APRab04743**



Immunohistochemical analysis of paraffin-embedded Human brain. Antibody was diluted at 1:100 (4°,overnight) . High-pressure and temperature Tris-EDTA,pH8.0 was used for antigen retrieval. Negative contrl (right) obtaned from antibody was pre-absorbed by immunogen peptide.

Note

For research use only.