

**Product Name: GAP-43 (phospho Ser41) Rabbit Polyclonal Antibody**  
**Catalog #: APRab04722**

---

## Summary

<b>Production Name</b>	GAP-43 (phospho Ser41) Rabbit Polyclonal Antibody
<b>Description</b>	Rabbit Polyclonal Antibody
<b>Host</b>	Rabbit
<b>Application</b>	IF-P,IF-F,ICC/IF,ELISA
<b>Reactivity</b>	Human,Mouse,Rat

## Performance

<b>Conjugation</b>	Unconjugated
<b>Modification</b>	Phospho Antibody
<b>Isotype</b>	IgG
<b>Clonality</b>	Polyclonal
<b>Form</b>	Liquid
<b>Storage</b>	Store at 4°C short term. Aliquot and store at -20°C long term. Avoid freeze/thaw cycles.
<b>Buffer</b>	Liquid in PBS containing 50% glycerol, 0.5% BSA and 0.02% New type preservative N.
<b>Purification</b>	Affinity purification

## Immunogen

<b>Gene Name</b>	GAP43
<b>Alternative Names</b>	GAP43; Neuromodulin; Axonal membrane protein GAP-43; Growth-associated protein 43; Neural phosphoprotein B-50; pp46
<b>Gene ID</b>	2596.0
<b>SwissProt ID</b>	P17677.The antiserum was produced against synthesized peptide derived from human GAP43 around the phosphorylation site of Ser41. AA range:8-57

## Application

<b>Dilution Ratio</b>	IF-P/IF-F/ICC/IF 1:200-1:1000, ELISA 1:20000.Not yet tested in other applications.
<b>Molecular Weight</b>	

**Product Name: GAP-43 (phospho Ser41) Rabbit  
Polyclonal Antibody  
Catalog #: APRab04722**

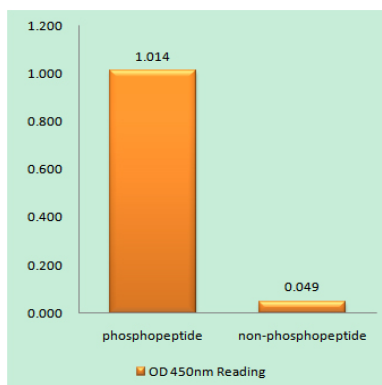


## Background

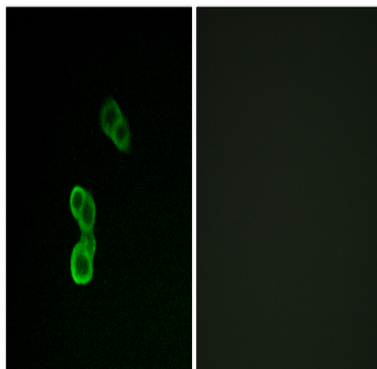
The protein encoded by this gene has been termed a 'growth' or 'plasticity' protein because it is expressed at high levels in neuronal growth cones during development and axonal regeneration. This protein is considered a crucial component of an effective regenerative response in the nervous system. Alternatively spliced transcript variants encoding distinct isoforms have been found for this gene. [provided by RefSeq, Jul 2008],function:This protein is associated with nerve growth. It is a major component of the motile "growth cones" that form the tips of elongating axons.,online information:Gap-43 entry,PTM:Phosphorylation of this protein by a protein kinase C is specifically correlated with certain forms of synaptic plasticity.,similarity:Belongs to the neuromodulin family.,similarity:Contains 1 IQ domain.,subcellular location:Cytoplasmic surface of growth cone and synaptic plasma membranes.,subunit:Binds calmodulin with a greater affinity in the absence of Ca(2+) than in its presence.,

## Research Area

## Image Data



Enzyme-Linked Immunosorbent Assay (Phospho-ELISA) for Immunogen Phosphopeptide (Phospho-left) and Non-Phosphopeptide (Phospho-right), using GAP43 (Phospho-Ser41) Antibody





**Product Name: GAP-43 (phospho Ser41) Rabbit  
Polyclonal Antibody  
Catalog #: APRab04722**

---

Immunofluorescence analysis of MCF-7 cells, using GAP43 (Phospho-Ser41) Antibody. The picture on the right is blocked with the phospho peptide.

**Note**

For research use only.