

Product Name: Flt-3 (phospho Tyr969) Rabbit Polyclonal Antibody
Catalog #: APRab04687

Summary

Production Name	Flt-3 (phospho Tyr969) Rabbit Polyclonal Antibody
Description	Rabbit Polyclonal Antibody
Host	Rabbit
Application	WB,IHC-P,IF-P,IF-F,ICC/IF,ELISA
Reactivity	Human,Rat,Mouse

Performance

Conjugation	Unconjugated
Modification	Phospho Antibody
Isotype	IgG
Clonality	Polyclonal
Form	Liquid
Storage	Store at 4°C short term. Aliquot and store at -20°C long term. Avoid freeze/thaw cycles.
Buffer	Liquid in PBS containing 50% glycerol, 0.5% BSA and 0.02% New type preservative N.
Purification	Affinity purification

Immunogen

Gene Name	FLT3 FLT3; CD135; FLK2; STK1; Receptor-type tyrosine-protein kinase FLT3; FL cytokine receptor; Fetal liver kinase-2; FLK-2; Fms-like tyrosine kinase 3; FLT-3; Stem cell tyrosine kinase 1; STK-1; CD antigen CD135
Alternative Names	
Gene ID	2322.0
SwissProt ID	P36888.The antiserum was produced against synthesized peptide derived from human FLT3 around the phosphorylation site of Tyr969. AA range:935-984

Application

Dilution Ratio	WB 1:500-1:2000, IHC-P 1:100-1:300, ELISA 1:5000, IF-P/IF-F/ICC/IF 1:50-200
Molecular Weight	150kDa

Product Name: Flt-3 (phospho Tyr969) Rabbit Polyclonal Antibody
Catalog #: APRab04687

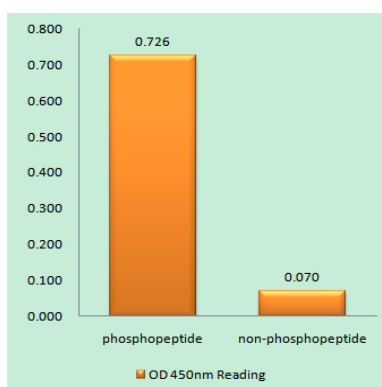
Background

This gene encodes a class III receptor tyrosine kinase that regulates hematopoiesis. This receptor is activated by binding of the fms-related tyrosine kinase 3 ligand to the extracellular domain, which induces homodimer formation in the plasma membrane leading to autophosphorylation of the receptor. The activated receptor kinase subsequently phosphorylates and activates multiple cytoplasmic effector molecules in pathways involved in apoptosis, proliferation, and differentiation of hematopoietic cells in bone marrow. Mutations that result in the constitutive activation of this receptor result in acute myeloid leukemia and acute lymphoblastic leukemia. [provided by RefSeq, Jan 2015],catalytic activity:ATP + a [protein]-L-tyrosine = ADP + a [protein]-L-tyrosine phosphate,.,function:Receptor for the FL cytokine. Has a tyrosine-protein kinase activity,.,similarity:Belongs to the protein kinase superfamily. Tyr protein kinase family,.,similarity:Belongs to the protein kinase superfamily. Tyr protein kinase family. CSF-1/PDGF receptor subfamily,.,similarity:Contains 1 Ig-like C2-type (immunoglobulin-like) domain,.,similarity:Contains 1 protein kinase domain,.,subunit:Interacts with FIZ1 following ligand activation,.,tissue specificity:Bone marrow cells,.

Research Area

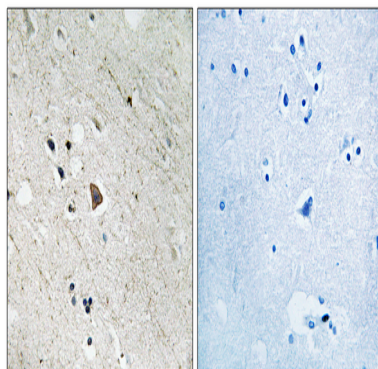
Cytokine-cytokine receptor interaction;Hematopoietic cell lineage;Pathways in cancer;Acute myeloid leukemia;

Image Data

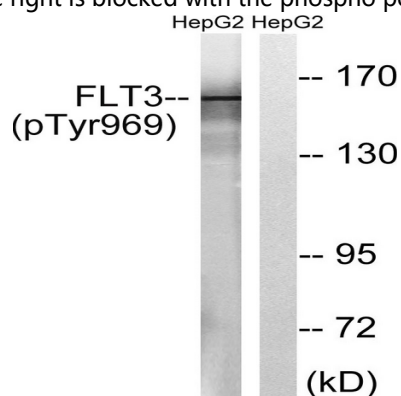


Enzyme-Linked Immunosorbent Assay (Phospho-ELISA) for Immunogen Phosphopeptide (Phospho-left) and Non-Phosphopeptide (Phospho-right) , using FLT3 (Phospho-Tyr969) Antibody

Product Name: Flt-3 (phospho Tyr969) Rabbit Polyclonal Antibody
Catalog #: APRab04687



Immunohistochemistry analysis of paraffin-embedded human brain, using FLT3 (Phospho-Tyr969) Antibody. The picture on the right is blocked with the phospho peptide.



Western blot analysis of lysates from HepG2 cells treated with Na₃VO₄ 0.3mM 40', using FLT3 (Phospho-Tyr969) Antibody. The lane on the right is blocked with the phospho peptide.

Note

For research use only.