

Product Name: Fer (phospho Tyr402) Rabbit Polyclonal Antibody
Catalog #: APRab04668

Summary

Production Name	Fer (phospho Tyr402) Rabbit Polyclonal Antibody
Description	Rabbit Polyclonal Antibody
Host	Rabbit
Application	WB,IHC-P,IF-P,IF-F,ICC/IF,ELISA
Reactivity	Human,Mouse

Performance

Conjugation	Unconjugated
Modification	Phospho Antibody
Isotype	IgG
Clonality	Polyclonal
Form	Liquid
Storage	Store at 4°C short term. Aliquot and store at -20°C long term. Avoid freeze/thaw cycles.
Buffer	Liquid in PBS containing 50% glycerol, 0.5% BSA and 0.02% New type preservative N.
Purification	Affinity purification

Immunogen

Gene Name	FER FER; TYK3; Tyrosine-protein kinase Fer; Feline encephalitis virus-related kinase FER;
Alternative Names	Fujinami poultry sarcoma/Feline sarcoma-related protein Fer; Proto-oncogene c-Fer; Tyrosine kinase 3; p94-Fer
Gene ID	2241.0
SwissProt ID	P16591.The antiserum was produced against synthesized peptide derived from human FER around the phosphorylation site of Tyr402. AA range:371-420

Application

Dilution Ratio	WB 1:500-1:2000, IHC-P 1:100-1:300, ELISA 1:20000, IF-P/IF-F/ICC/IF 1:50-200
Molecular Weight	85kDa

Product Name: Fer (phospho Tyr402) Rabbit Polyclonal Antibody
Catalog #: AP Rab04668



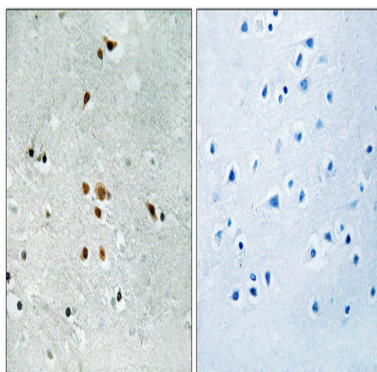
Background

The protein encoded by this gene is a member of the FPS/FES family of non-transmembrane receptor tyrosine kinases. It regulates cell-cell adhesion and mediates signaling from the cell surface to the cytoskeleton via growth factor receptors. Alternative splicing results in multiple transcript variants. A related pseudogene has been identified on chromosome X. [provided by RefSeq, Apr 2015], catalytic activity: ATP + a [protein]-L-tyrosine = ADP + a [protein]-L-tyrosine phosphate., function: Tyrosine kinase of the non-receptor type. Probably performs an important function, perhaps in regulatory processes such as cell cycle control., similarity: Belongs to the protein kinase superfamily. Tyr protein kinase family. Fes/fps subfamily., similarity: Contains 1 FCH domain., similarity: Contains 1 protein kinase domain., similarity: Contains 1 SH2 domain., subcellular location: Associated with the chromatin., tissue specificity: Expressed in a variety of lymphoid cell lines.,

Research Area

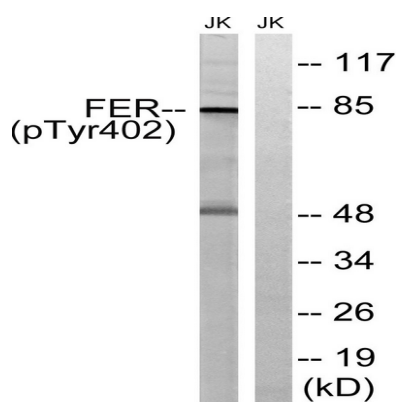
Adherens_Junction;

Image Data



Immunohistochemistry analysis of paraffin-embedded human brain, using FER (Phospho-Tyr402) Antibody. The picture on the right is blocked with the phospho peptide.

Product Name: Fer (phospho Tyr402) Rabbit Polyclonal Antibody
Catalog #: APRab04668



Western blot analysis of lysates from Jurkat cells treated with starved 24h, using FER (Phospho-Tyr402) Antibody. The lane on the right is blocked with the phospho peptide.

Note

For research use only.