

Product Name: FADD (phospho Ser191) Rabbit Polyclonal Antibody
Catalog #: APRab04653

Summary

| | |
|------------------------|--|
| Production Name | FADD (phospho Ser191) Rabbit Polyclonal Antibody |
| Description | Rabbit Polyclonal Antibody |
| Host | Rabbit |
| Application | WB,IHC-P,IF-P,IF-F,ICC/IF,ELISA |
| Reactivity | Mouse |

Performance

| | |
|---------------------|--|
| Conjugation | Unconjugated |
| Modification | Phospho Antibody |
| Isotype | IgG |
| Clonality | Polyclonal |
| Form | Liquid |
| Storage | Store at 4°C short term. Aliquot and store at -20°C long term. Avoid freeze/thaw cycles. |
| Buffer | Liquid in PBS containing 50% glycerol, 0.5% BSA and 0.02% New type preservative N. |
| Purification | Affinity purification |

Immunogen

| | |
|--------------------------|--|
| Gene Name | FADD FADD; MORT1; GIG3; Protein FADD; FAS-associated death domain protein; FAS-associating death domain-containing protein; Growth-inhibiting gene 3 protein; Mediator of receptor induced toxicity |
| Alternative Names | |
| Gene ID | 14082.0 |
| SwissProt ID | .The antiserum was produced against synthesized peptide derived from mouse FADD around the phosphorylation site of Ser191. AA range:157-206 |

Application

| | |
|-------------------------|---|
| Dilution Ratio | WB 1:500-1:2000, IHC-P 1:100-1:300, ELISA 1:5000, IF-P/IF-F/ICC/IF 1:50-200 |
| Molecular Weight | 25kDa |

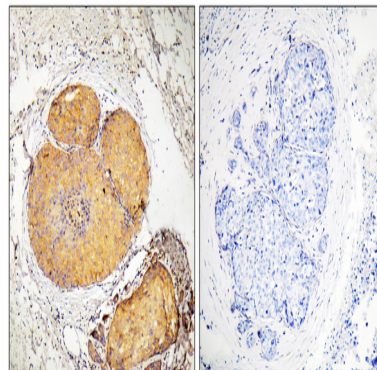
**Product Name: FADD (phospho Ser191) Rabbit
Polyclonal Antibody
Catalog #: APRab04653**

Background

The Fas associated via death domain encoded by FADD is an adaptor molecule that interacts with various cell surface receptors and mediates cell apoptotic signals. Through its C-terminal death domain, this protein can be recruited by TNFRSF6/Fas-receptor, tumor necrosis factor receptor, TNFRSF25, and TNFSF10/TRAIL-receptor, and thus it participates in the death signaling initiated by these receptors. Interaction of this protein with the receptors unmasks the N-terminal effector domain of this protein, which allows it to recruit caspase-8, and thereby activate the cysteine protease cascade. Knockout studies in mice also suggest the importance of this protein in early T cell development.

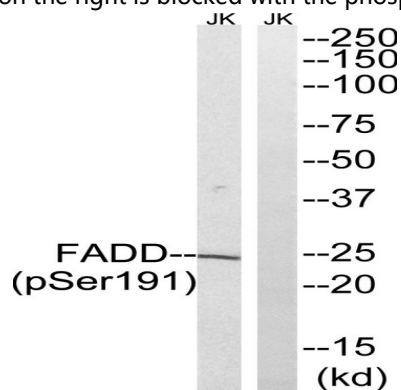
Research Area

Image Data



Immunohistochemistry analysis of paraffin-embedded human breast carcinoma, using FADD (Phospho-Ser191) Antibody.

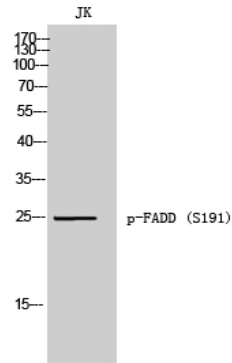
The picture on the right is blocked with the phospho peptide.



Western blot analysis of lysates from Jurkat cells treated with PMA 125ng/ml 30 ', using FADD (Phospho-Ser191)

Antibody. The lane on the right is blocked with the phospho peptide.

**Product Name: FADD (phospho Ser191) Rabbit
Polyclonal Antibody
Catalog #: APRab04653**



Western Blot analysis of JK cells using Phospho-FADD (S191) Polyclonal Antibody

Note

For research use only.