

**Product Name: Ephrin-B1/2 (phospho Tyr329) Rabbit Polyclonal Antibody**  
**Catalog #: APRab04618**

---



## Summary

<b>Production Name</b>	Ephrin-B1/2 (phospho Tyr329) Rabbit Polyclonal Antibody
<b>Description</b>	Rabbit Polyclonal Antibody
<b>Host</b>	Rabbit
<b>Application</b>	IHC-P,IF-P,IF-F,ICC/IF,ELISA
<b>Reactivity</b>	Human,Mouse,Rat

## Performance

<b>Conjugation</b>	Unconjugated
<b>Modification</b>	Phospho Antibody
<b>Isotype</b>	IgG
<b>Clonality</b>	Polyclonal
<b>Form</b>	Liquid
<b>Storage</b>	Store at 4°C short term. Aliquot and store at -20°C long term. Avoid freeze/thaw cycles.
<b>Buffer</b>	Liquid in PBS containing 50% glycerol, 0.5% BSA and 0.02% New type preservative N.
<b>Purification</b>	Affinity purification

## Immunogen

<b>Gene Name</b>	EFNB1/EFNB2 EFNB1; EFL3; EPLG2; LERK2; Ephrin-B1; EFL-3; ELK ligand; ELK-L; EPH-related receptor tyrosine kinase ligand 2; LERK-2; EFNB2; EPLG5; HTKL; LERK5; Ephrin-B2; EPH-related receptor tyrosine kinase ligand 5; LERK-5; HTK ligand; HTK-L
<b>Alternative Names</b>	
<b>Gene ID</b>	1947/1948
<b>SwissProt ID</b>	P98172/P52799.The antiserum was produced against synthesized peptide derived from human Ephrin B1/B2 around the phosphorylation site of Tyr329. AA range:295-344

## Application

<b>Dilution Ratio</b>	IHC-P 1:100-1:300, ELISA 1:10000, IF-P/IF-F/ICC/IF 1:50-200
-----------------------	---

**Product Name: Ephrin-B1/2 (phospho Tyr329) Rabbit Polyclonal Antibody**  
**Catalog #: AP Rab04618**



---

#### Molecular Weight

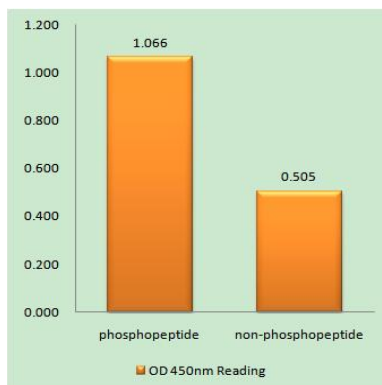
### Background

The protein encoded by this gene is a type I membrane protein and a ligand of Eph-related receptor tyrosine kinases. It may play a role in cell adhesion and function in the development or maintenance of the nervous system. [provided by RefSeq, Jul 2008],disease:Defects in EFNB1 are a cause of craniofrontonasal syndrome (CFNS) [MIM:304110]; also known as craniofrontonasal dysplasia (CFND). CFNS is an X-linked inherited syndrome characterized by hypertelorism, coronal synostosis with brachycephaly, downslanting palpebral fissures, clefting of the nasal tip, joint anomalies, longitudinally grooved fingernails and other digital anomalies.,function: Binds to the receptor tyrosine kinases EPHB1 and EPHA1. Binds to, and induce the collapse of, commissural axons/growth cones in vitro. May play a role in constraining the orientation of longitudinally projecting axons.,induction: By TNF-alpha.,PTM: Inducible phosphorylation of tyrosine residues in the cytoplasmic domain.,similarity: Belongs to the ephrin family.,subunit: Interacts with GRIP1 and GRIP2.,tissue specificity: Heart, placenta, lung, liver, skeletal muscle, kidney, pancreas.,

### Research Area

Axon guidance;

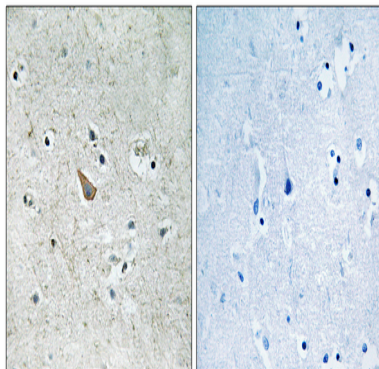
### Image Data



Enzyme-Linked Immunosorbent Assay (Phospho-ELISA) for Immunogen Phosphopeptide (Phospho-left) and Non-Phosphopeptide (Phospho-right) , using Ephrin B1/B2 (Phospho-Tyr329) Antibody

**Product Name: Ephrin-B1/2 (phospho Tyr329) Rabbit  
Polyclonal Antibody  
Catalog #: APRab04618**

---



Immunohistochemistry analysis of paraffin-embedded human brain, using Ephrin B1/B2 (Phospho-Tyr329) Antibody. The picture on the right is blocked with the phospho peptide.

### **Note**

For research use only.