

Product Name: DOR-1 (phospho Ser363) Rabbit Polyclonal Antibody
Catalog #: APRab04560

Summary

Production Name	DOR-1 (phospho Ser363) Rabbit Polyclonal Antibody
Description	Rabbit Polyclonal Antibody
Host	Rabbit
Application	WB,IHC-P,IF-P,IF-F,ICC/IF,ELISA
Reactivity	Human,Mouse,Rat

Performance

Conjugation	Unconjugated
Modification	Phospho Antibody
Isotype	IgG
Clonality	Polyclonal
Form	Liquid
Storage	Store at 4°C short term. Aliquot and store at -20°C long term. Avoid freeze/thaw cycles.
Buffer	Liquid in PBS containing 50% glycerol, 0.5% BSA and 0.02% New type preservative N.
Purification	Affinity purification

Immunogen

Gene Name	OPRD1
Alternative Names	OPRD1; OPRD; Delta-type opioid receptor; D-OR-1; DOR-1
Gene ID	4985.0
SwissProt ID	P41143.The antiserum was produced against synthesized peptide derived from human Opioid Receptor-delta around the phosphorylation site of Ser363. AA range:323-372

Application

Dilution Ratio	WB 1:500-1:2000, IHC-P 1:100-1:300, ELISA 1:5000, IF-P/IF-F/ICC/IF 1:50-200
Molecular Weight	36kDa

Product Name: DOR-1 (phospho Ser363) Rabbit Polyclonal Antibody
Catalog #: APRab04560

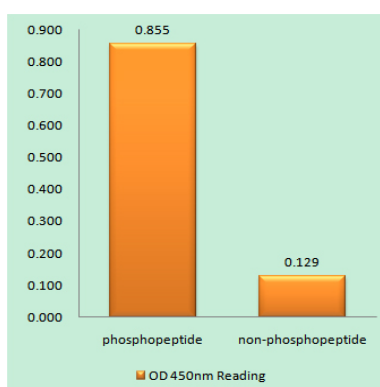
Background

function: Inhibits neurotransmitter release by reducing calcium ion currents and increasing potassium ion conductance. Highly stereoselective. receptor for enkephalins., online information: Delta opioid receptor entry, similarity: Belongs to the G-protein coupled receptor 1 family., subunit: Interacts with GPRASP1., function: Inhibits neurotransmitter release by reducing calcium ion currents and increasing potassium ion conductance. Highly stereoselective. receptor for enkephalins., online information: Delta opioid receptor entry, similarity: Belongs to the G-protein coupled receptor 1 family., subunit: Interacts with GPRASP1.,

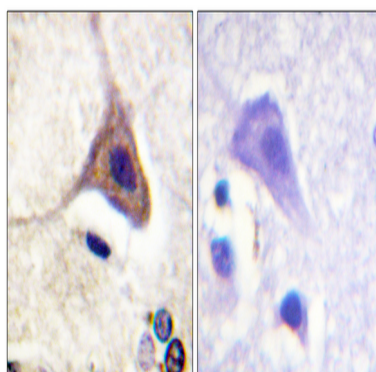
Research Area

Neuroactive ligand-receptor interaction;

Image Data

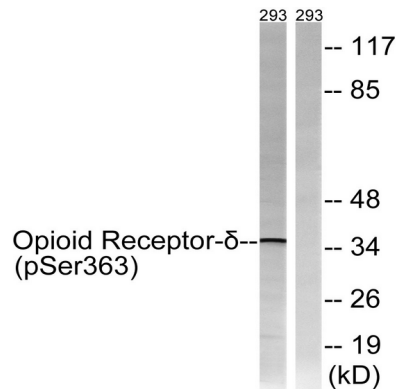


Enzyme-Linked Immunosorbent Assay (Phospho-ELISA) for Immunogen Phosphopeptide (Phospho-left) and Non-Phosphopeptide (Phospho-right), using Opioid Receptor-delta (Phospho-Ser363) Antibody

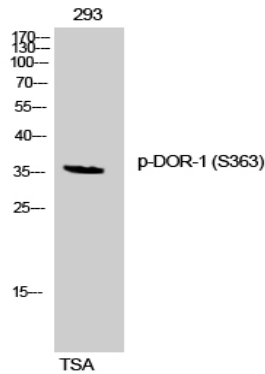


Immunohistochemistry analysis of paraffin-embedded human brain, using Opioid Receptor-delta (Phospho-Ser363) Antibody. The picture on the right is blocked with the phosphopeptide.

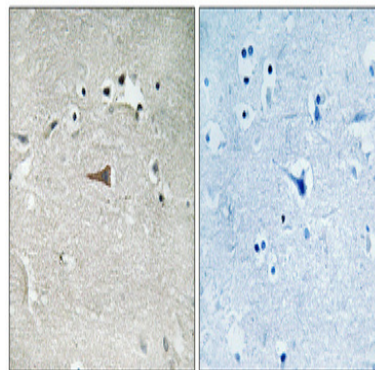
Product Name: DOR-1 (phospho Ser363) Rabbit Polyclonal Antibody
Catalog #: AP Rab04560



Western blot analysis of lysates from 293 cells treated with TSA 400nM 24h, using Opioid Receptor-delta (Phospho-Ser363) Antibody. The lane on the right is blocked with the phospho peptide.



Western Blot analysis of 293 cells using Phospho-DOR-1 (S363) Polyclonal Antibody



Immunohistochemical analysis of paraffin-embedded Human brain. Antibody was diluted at 1:100 (4°, overnight). High-pressure and temperature Tris-EDTA, pH 8.0 was used for antigen retrieval. Negative control (right) obtained from antibody was pre-absorbed by immunogen peptide.

Note

For research use only.