

Product Name: Cytokeratin 18 (phospho Ser52) Rabbit Polyclonal Antibody
Catalog #: APRab04531



Summary

Production Name	Cytokeratin 18 (phospho Ser52) Rabbit Polyclonal Antibody
Description	Rabbit Polyclonal Antibody
Host	Rabbit
Application	WB,IHC-P,IF-P,IF-F,ICC/IF,ELISA
Reactivity	Human,Rat,Mouse

Performance

Conjugation	Unconjugated
Modification	Phospho Antibody
Isotype	IgG
Clonality	Polyclonal
Form	Liquid
Storage	Store at 4°C short term. Aliquot and store at -20°C long term. Avoid freeze/thaw cycles.
Buffer	Liquid in PBS containing 50% glycerol, 0.5% BSA and 0.02% New type preservative N.
Purification	Affinity purification

Immunogen

Gene Name	KRT18
Alternative Names	KRT18; CYK18; PIG46; Keratin; type I cytoskeletal 18; Cell proliferation-inducing gene 46 protein; Cytokeratin-18; CK-18; Keratin-18; K18
Gene ID	3875.0
SwissProt ID	P05783.The antiserum was produced against synthesized peptide derived from human Keratin 18 around the phosphorylation site of Ser52. AA range:21-70

Application

Dilution Ratio	WB 1:500-1:2000, IHC-P 1:100-1:300, IF-P/IF-F/ICC/IF 1:200-1:1000, ELISA 1:10000.Not yet tested in other applications.
-----------------------	------------------------------------------------------------------------------------------------------------------------

**Product Name: Cytokeratin 18 (phospho Ser52) Rabbit
Polyclonal Antibody
Catalog #: AP Rab04531**



Molecular Weight 48kDa

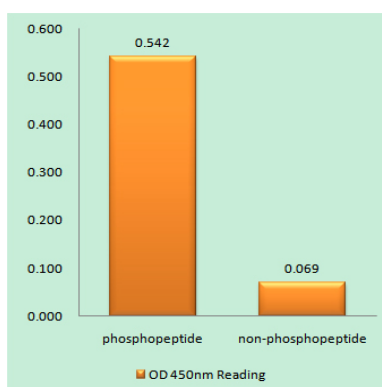
Background

KRT18 encodes the type I intermediate filament chain keratin 18. Keratin 18, together with its filament partner keratin 8, are perhaps the most commonly found members of the intermediate filament gene family. They are expressed in single layer epithelial tissues of the body. Mutations in this gene have been linked to cryptogenic cirrhosis. Two transcript variants encoding the same protein have been found for this gene. [provided by RefSeq, Jul 2008],disease:Defects in KRT18 are a cause of cryptogenic cirrhosis [MIM:215600],function:Involved in the uptake of thrombin-antithrombin complexes by hepatic cells (By similarity). When phosphorylated, plays a role in filament reorganization. Involved in the delivery of mutated CFTR to the plasma membrane. Together with KRT8, is involved in interleukin-6 (IL-6)-mediated barrier protection.,induction:By IL-6.,miscellaneous:There are two types of cytoskeletal and microfibrillar keratin: I (acidic; 40-55 kDa) and II (neutral to basic; 56-70 kDa),PTM:O-glycosylated at multiple sites; glycans consist of single N-acetylglucosamine residues.,PTM:Phosphorylation at Ser-34 increases during mitosis. Hyperphosphorylated at Ser-53 in diseased cirrhosis liver. Phosphorylation increases by IL-6.,PTM:Proteolytically cleaved by caspases during epithelial cell apoptosis. Cleavage occurs at Asp-238 by either caspase-3, caspase-6 or caspase-7.,similarity:Belongs to the intermediate filament family.,subunit:Heterotetramer of two type I and two type II keratins. Keratin-18 associates with keratin-8. Interacts with the thrombin-antithrombin complex (By similarity). Interacts with PNN, HCV core protein and mutated CFTR. Interacts with YWHAE, YWHAH and YWHAZ only when phosphorylated. Interacts with DNAJB6, TCHP and TRADD.,tissue specificity:Expressed in colon, placenta, liver and very weakly in exocervix. Increased expression observed in lymph nodes of breast carcinoma.,

Research Area

Pathogenic Escherichia coli infection;

Image Data

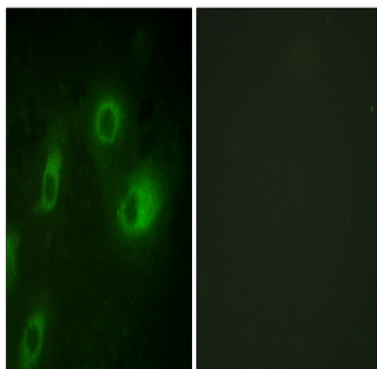


Enzyme-Linked Immunosorbent Assay (Phospho-ELISA) for Immunogen Phosphopeptide (Phospho-left) and Non-

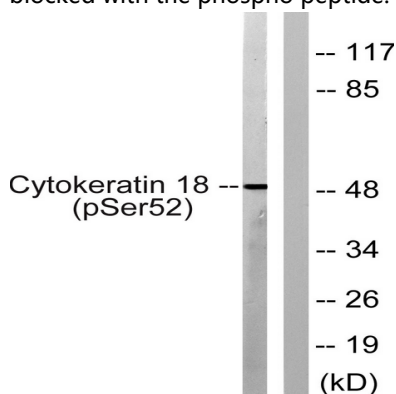
Product Name: Cytokeratin 18 (phospho Ser52) Rabbit Polyclonal Antibody
Catalog #: APRab04531



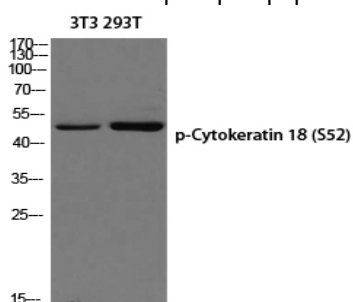
Phosphopeptide (Phospho-right) , using Keratin 18 (Phospho-Ser52) Antibody



Immunofluorescence analysis of HeLa cells, using Keratin 18 (Phospho-Ser52) Antibody. The picture on the right is blocked with the phospho peptide.

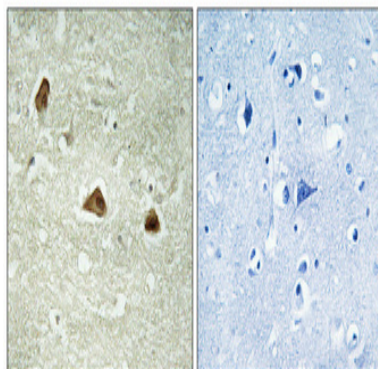


Western blot analysis of lysates from HepG2 cells, using Keratin 18 (Phospho-Ser52) Antibody. The lane on the right is blocked with the phospho peptide.



Western blot analysis of 3T3 293T using p-Cytokeratin 18 (S52) antibody. Antibody was diluted at 1:500

**Product Name: Cytokeratin 18 (phospho Ser52) Rabbit
Polyclonal Antibody
Catalog #: APRab04531**



Immunohistochemical analysis of paraffin-embedded Human brain. Antibody was diluted at 1:100 (4°,overnight) . High-pressure and temperature Tris-EDTA,pH8.0 was used for antigen retrieval. Negative contrl (right) obtaned from antibody was pre-absorbed by immunogen peptide.

Note

For research use only.