

**Product Name: c-Src (phospho Tyr529) Rabbit Polyclonal Antibody**  
**Catalog #: APRab04514**

---

## Summary

<b>Production Name</b>	c-Src (phospho Tyr529) Rabbit Polyclonal Antibody
<b>Description</b>	Rabbit Polyclonal Antibody
<b>Host</b>	Rabbit
<b>Application</b>	WB,IHC-P,IF-P,IF-F,ICC/IF,ELISA
<b>Reactivity</b>	Human,Mouse,Rat,Monkey

## Performance

<b>Conjugation</b>	Unconjugated
<b>Modification</b>	Phospho Antibody
<b>Isotype</b>	IgG
<b>Clonality</b>	Polyclonal
<b>Form</b>	Liquid
<b>Storage</b>	Store at 4°C short term. Aliquot and store at -20°C long term. Avoid freeze/thaw cycles.
<b>Buffer</b>	Liquid in PBS containing 50% glycerol, 0.5% BSA and 0.02% New type preservative N.
<b>Purification</b>	Affinity purification

## Immunogen

<b>Gene Name</b>	SRC
<b>Alternative Names</b>	SRC; SRC1; Proto-oncogene tyrosine-protein kinase Src; Proto-oncogene c-Src; pp60c-src; p60-Src
<b>Gene ID</b>	6714.0
<b>SwissProt ID</b>	P12931.The antiserum was produced against synthesized peptide derived from human Src around the phosphorylation site of Tyr529. AA range:487-536

## Application

<b>Dilution Ratio</b>	WB 1:500-1:2000, IHC-P 1:100-1:300, ELISA 1:10000, IF-P/IF-F/ICC/IF 1:50-200
<b>Molecular Weight</b>	59kDa

**Product Name: c-Src (phospho Tyr529) Rabbit Polyclonal Antibody**  
**Catalog #: APRab04514**

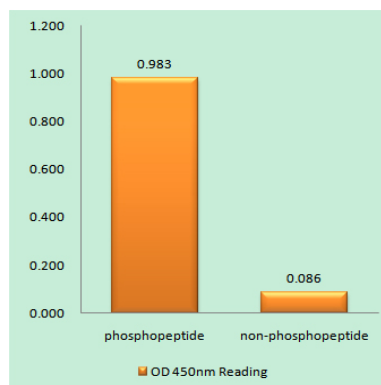
## Background

This gene is highly similar to the v-src gene of Rous sarcoma virus. This proto-oncogene may play a role in the regulation of embryonic development and cell growth. The protein encoded by this gene is a tyrosine-protein kinase whose activity can be inhibited by phosphorylation by c-SRC kinase. Mutations in this gene could be involved in the malignant progression of colon cancer. Two transcript variants encoding the same protein have been found for this gene. [provided by RefSeq, Jul 2008],catalytic activity:ATP + a [protein]-L-tyrosine = ADP + a [protein]-L-tyrosine phosphate.,PTM:Phosphorylated on Tyr-530 by c-Src kinase (CSK). The phosphorylated form is termed pp60c-src. The phosphorylated tail interacts with the SH2 domain thereby repressing kinase activity.,similarity:Belongs to the protein kinase superfamily. Tyr protein kinase family. SRC subfamily.,similarity:Contains 1 protein kinase domain.,similarity:Contains 1 SH2 domain.,similarity:Contains 1 SH3 domain.,subunit:Interacts with DDEF1/ASAP1; via the SH3 domain. Interacts with CCPG1 (By similarity). Interacts with CDCP1, PELP1, TGFB1I1 and TOM1L2. Interacts with the cytoplasmic domain of MUC1, phosphorylates it and increases binding of MUC1 with beta-catenin. Interacts with RALGPS1; via the SH3 domain. Interacts with HEV ORF3 protein; via the SH3 domain.,

## Research Area

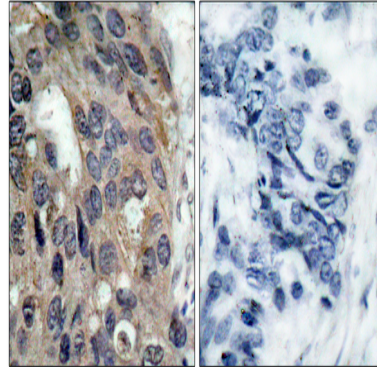
ErbB\_HER;Endocytosis;VEGF;Focal adhesion;Adherens\_Junction;Adherens\_Junction;Gap junction;GnRH;Epithelial cell signaling in Helicobacter pylori infection;

## Image Data



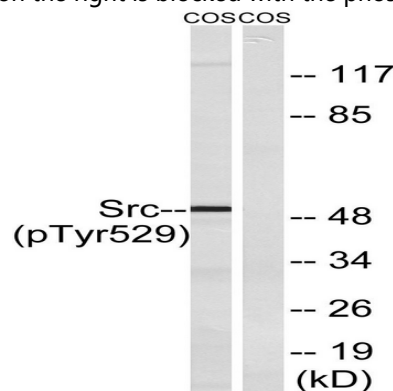
Enzyme-Linked Immunosorbent Assay (Phospho-ELISA) for Immunogen Phosphopeptide (Phospho-left) and Non-Phosphopeptide (Phospho-right) , using Src (Phospho-Tyr529) Antibody

**Product Name: c-Src (phospho Tyr529) Rabbit Polyclonal Antibody**  
**Catalog #: APRab04514**



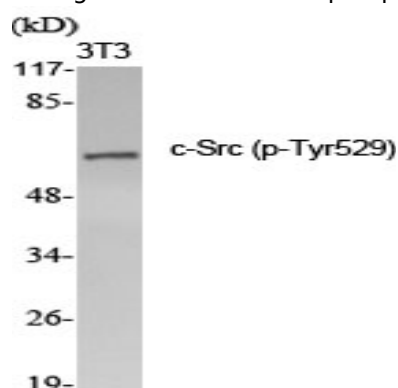
Immunohistochemistry analysis of paraffin-embedded human breast carcinoma, using Src (Phospho-Tyr529) Antibody.

The picture on the right is blocked with the phospho peptide.



Western blot analysis of lysates from COS7 cells treated with PMA 125ng/ml 30 ', using Src (Phospho-Tyr529) Antibody.

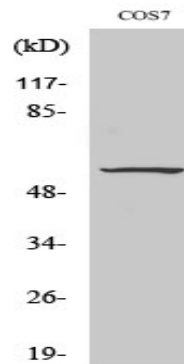
The lane on the right is blocked with the phospho peptide.



Western Blot analysis of various cells using Phospho-c-Src (Y529) Polyclonal Antibody diluted at 1: 2000

**Product Name: c-Src (phospho Tyr529) Rabbit  
Polyclonal Antibody  
Catalog #: APRab04514**

---



Western Blot analysis of COS7 cells using Phospho-c-Src (Y529) Polyclonal Antibody diluted at 1: 2000

### **Note**

For research use only.