

Product Name: c-Src (phospho Tyr419) Rabbit Polyclonal Antibody
Catalog #: APRab04513

Summary

Production Name	c-Src (phospho Tyr419) Rabbit Polyclonal Antibody
Description	Rabbit Polyclonal Antibody
Host	Rabbit
Application	WB,IHC-P,IF-P,IF-F,ICC/IF,ELISA
Reactivity	Human,Mouse,Rat

Performance

Conjugation	Unconjugated
Modification	Phospho Antibody
Isotype	IgG
Clonality	Polyclonal
Form	Liquid
Storage	Store at 4°C short term. Aliquot and store at -20°C long term. Avoid freeze/thaw cycles.
Buffer	Liquid in PBS containing 50% glycerol, 0.5% BSA and 0.02% New type preservative N.
Purification	Affinity purification

Immunogen

Gene Name	SRC
Alternative Names	SRC; SRC1; Proto-oncogene tyrosine-protein kinase Src; Proto-oncogene c-Src; pp60c-src; p60-Src
Gene ID	6714.0
SwissProt ID	P12931. Synthesized phospho-peptide around the phosphorylation site of human c-Src (phospho Tyr419)

Application

Dilution Ratio	WB 1:500-1:2000, IHC-P 1:100-1:300, ELISA 1:20000, IF-P/IF-F/ICC/IF 1:50-200
Molecular Weight	60kDa

Product Name: c-Src (phospho Tyr419) Rabbit Polyclonal Antibody
Catalog #: AP Rab04513

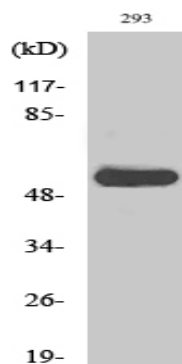
Background

This gene is highly similar to the v-src gene of Rous sarcoma virus. This proto-oncogene may play a role in the regulation of embryonic development and cell growth. The protein encoded by this gene is a tyrosine-protein kinase whose activity can be inhibited by phosphorylation by c-SRC kinase. Mutations in this gene could be involved in the malignant progression of colon cancer. Two transcript variants encoding the same protein have been found for this gene. [provided by RefSeq, Jul 2008], catalytic activity: ATP + a [protein]-L-tyrosine = ADP + a [protein]-L-tyrosine phosphate., PTM: Phosphorylated on Tyr-530 by c-Src kinase (CSK). The phosphorylated form is termed pp60c-src. The phosphorylated tail interacts with the SH2 domain thereby repressing kinase activity., similarity: Belongs to the protein kinase superfamily. Tyr protein kinase family. SRC subfamily., similarity: Contains 1 protein kinase domain., similarity: Contains 1 SH2 domain., similarity: Contains 1 SH3 domain., subunit: Interacts with DDEF1/ASAP1; via the SH3 domain. Interacts with CCPG1 (By similarity). Interacts with CDCP1, PELP1, TGFB1I1 and TOM1L2. Interacts with the cytoplasmic domain of MUC1, phosphorylates it and increases binding of MUC1 with beta-catenin. Interacts with RALGPS1; via the SH3 domain. Interacts with HEV ORF3 protein; via the SH3 domain.,

Research Area

ErbB_HER; Endocytosis; VEGF; Focal adhesion; Adherens_Junction; Adherens_Junction; Gap junction; GnRH; Epithelial cell signaling in Helicobacter pylori infection;

Image Data



Western Blot analysis of various cells using Phospho-c-Src (Y419) Polyclonal Antibody diluted at 1: 1000

Note

For research use only.