

Product Name: Cdc25C (phospho Thr48) Rabbit Polyclonal Antibody
Catalog #: APRab04425

Summary

Production Name	Cdc25C (phospho Thr48) Rabbit Polyclonal Antibody
Description	Rabbit Polyclonal Antibody
Host	Rabbit
Application	WB,IHC-P,IF-P,IF-F,ICC/IF,ELISA
Reactivity	Human,Rat,Mouse

Performance

Conjugation	Unconjugated
Modification	Phospho Antibody
Isotype	IgG
Clonality	Polyclonal
Form	Liquid
Storage	Store at 4°C short term. Aliquot and store at -20°C long term. Avoid freeze/thaw cycles.
Buffer	Liquid in PBS containing 50% glycerol, 0.5% BSA and 0.02% New type preservative N.
Purification	Affinity purification

Immunogen

Gene Name	CDC25C
Alternative Names	CDC25C; M-phase inducer phosphatase 3; Dual specificity phosphatase Cdc25C
Gene ID	995.0
SwissProt ID	P30307.The antiserum was produced against synthesized peptide derived from human CDC25C around the phosphorylation site of Thr48. AA range:14-63

Application

Dilution Ratio	WB 1:500-1:2000, IHC-P 1:100-1:300, ELISA 1:5000, IF-P/IF-F/ICC/IF 1:50-200
Molecular Weight	80kDa

Product Name: Cdc25C (phospho Thr48) Rabbit Polyclonal Antibody
Catalog #: AP Rab04425

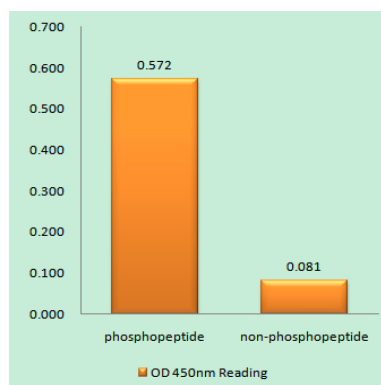
Background

cell division cycle 25C(CDC25C) Homo sapiens This gene encodes a conserved protein that plays a key role in the regulation of cell division. The encoded protein directs dephosphorylation of cyclin B-bound CDC2 and triggers entry into mitosis. It also suppresses p53-induced growth arrest. Multiple alternatively spliced transcript variants of this gene have been described. [provided by RefSeq, Dec 2015],catalytic activity:Protein tyrosine phosphate + H(2)O = protein tyrosine + phosphate.,developmental stage:Expressed predominantly in G2 phase.,function:Functions as a dosage-dependent inducer in mitotic control. It is a tyrosine protein phosphatase required for progression of the cell cycle. It directly dephosphorylates CDC2 and activate its kinase activity.,PTM:Phosphorylated by CHK1 on Ser-216. This phosphorylation creates a binding site for 14-3-3 protein and inhibits the phosphatase.,similarity:Belongs to the MPI phosphatase family.,similarity:Contains 1 rhodanese domain.,subunit:Interacts with HIV-1 Vpr, thereby inactivating CDC25C phosphatase activity.,

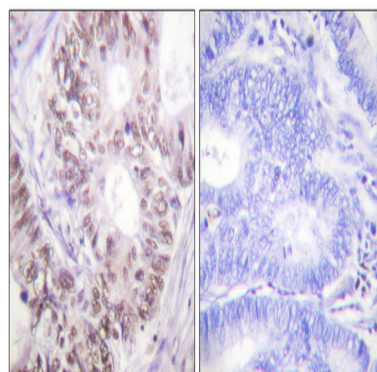
Research Area

Cell_Cycle_G1S;Cell_Cycle_G2M_DNA;Oocyte meiosis;Progesterone-mediated oocyte maturation;

Image Data



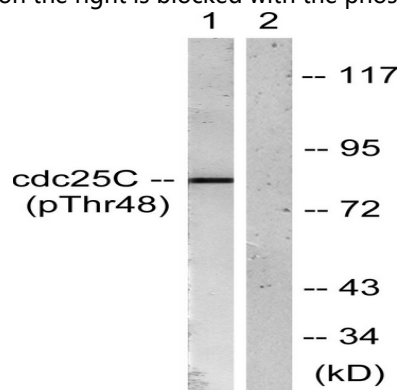
Enzyme-Linked Immunosorbent Assay (Phospho-ELISA) for Immunogen Phosphopeptide (Phospho-left) and Non-Phosphopeptide (Phospho-right) , using CDC25C (Phospho-Thr48) Antibody



Immunohistochemistry analysis of paraffin-embedded human colon carcinoma, using CDC25C (Phospho-Thr48) Antibody.

**Product Name: Cdc25C (phospho Thr48) Rabbit
Polyclonal Antibody
Catalog #: APRab04425**

The picture on the right is blocked with the phospho peptide.



Note

For research use only.