

Product Name: Cdc25B (phospho Ser353) Rabbit Polyclonal Antibody
Catalog #: APRab04422

Summary

Production Name	Cdc25B (phospho Ser353) Rabbit Polyclonal Antibody
Description	Rabbit Polyclonal Antibody
Host	Rabbit
Application	WB,IHC-P,IF-P,IF-F,ICC/IF,ELISA
Reactivity	Human,Monkey

Performance

Conjugation	Unconjugated
Modification	Phospho Antibody
Isotype	IgG
Clonality	Polyclonal
Form	Liquid
Storage	Store at 4°C short term. Aliquot and store at -20°C long term. Avoid freeze/thaw cycles.
Buffer	Liquid in PBS containing 50% glycerol, 0.5% BSA and 0.02% New type preservative N.
Purification	Affinity purification

Immunogen

Gene Name	CDC25B
Alternative Names	CDC25B; CDC25HU2; M-phase inducer phosphatase 2; Dual specificity phosphatase Cdc25B
Gene ID	994.0
SwissProt ID	P30305.The antiserum was produced against synthesized peptide derived from human CDC25B around the phosphorylation site of Ser353. AA range:319-368

Application

Dilution Ratio	WB 1:500-1:2000, IHC-P 1:100-1:300, ELISA 1:40000, IF-P/IF-F/ICC/IF 1:50-200
Molecular Weight	64kDa

Product Name: Cdc25B (phospho Ser353) Rabbit Polyclonal Antibody
Catalog #: AP Rab04422

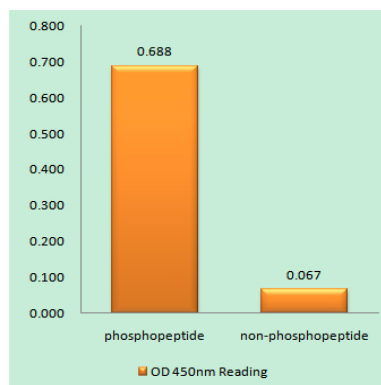
Background

cell division cycle 25B(CDC25B) Homo sapiens CDC25B is a member of the CDC25 family of phosphatases. CDC25B activates the cyclin dependent kinase CDC2 by removing two phosphate groups and it is required for entry into mitosis. CDC25B shuttles between the nucleus and the cytoplasm due to nuclear localization and nuclear export signals. The protein is nuclear in the M and G1 phases of the cell cycle and moves to the cytoplasm during S and G2. CDC25B has oncogenic properties, although its role in tumor formation has not been determined. Multiple transcript variants for this gene exist. [provided by RefSeq, Jul 2008],catalytic activity:Protein tyrosine phosphate + H(2)O = protein tyrosine + phosphate.,enzyme regulation:Stimulated by B-type cyclins.,function:Tyrosine protein phosphatase which functions as a dosage-dependent inducer of mitotic progression. Directly dephosphorylates CDC2 and stimulates its kinase activity. The three isoforms seem to have a different level of activity.,PTM:Phosphorylated by BRSK1 in vitro. Phosphorylated by CHEK1, which inhibits the activity of this protein.,similarity:Belongs to the MPI phosphatase family.,similarity:Contains 1 rhodanese domain.,

Research Area

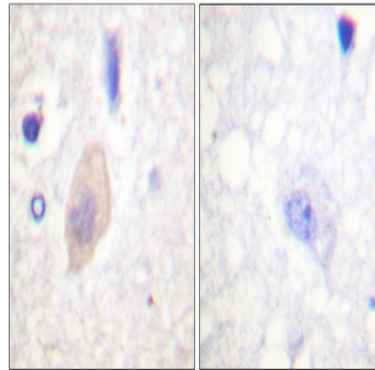
MAPK_ERK_Growth;MAPK_G_Protein;Cell_Cycle_G1S;Cell_Cycle_G2M_DNA;Progesterone-mediated oocyte maturation;

Image Data

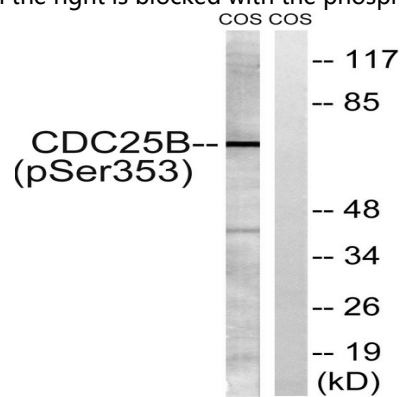


Enzyme-Linked Immunosorbent Assay (Phospho-ELISA) for Immunogen Phosphopeptide (Phospho-left) and Non-Phosphopeptide (Phospho-right) , using CDC25B (Phospho-Ser353) Antibody

Product Name: Cdc25B (phospho Ser353) Rabbit Polyclonal Antibody
Catalog #: APRab04422



Immunohistochemistry analysis of paraffin-embedded human brain, using CDC25B (Phospho-Ser353) Antibody. The picture on the right is blocked with the phospho peptide.



Western blot analysis of lysates from COS7 cells treated with etoposide 25uM 24h, using CDC25B (Phospho-Ser353) Antibody. The lane on the right is blocked with the phospho peptide.

Note

For research use only.