

Product Name: CD88 (phospho Ser338) Rabbit Polyclonal Antibody
Catalog #: APRab04410

Summary

Production Name	CD88 (phospho Ser338) Rabbit Polyclonal Antibody
Description	Rabbit Polyclonal Antibody
Host	Rabbit
Application	IHC-P,IF-P,IF-F,ICC/IF,ELISA
Reactivity	Human,Rat,Mouse

Performance

Conjugation	Unconjugated
Modification	Phospho Antibody
Isotype	IgG
Clonality	Polyclonal
Form	Liquid
Storage	Store at 4°C short term. Aliquot and store at -20°C long term. Avoid freeze/thaw cycles.
Buffer	Liquid in PBS containing 50% glycerol, 0.5% BSA and 0.02% New type preservative N.
Purification	Affinity purification

Immunogen

Gene Name	C5AR1
Alternative Names	C5AR1; C5AR; C5R1; C5a anaphylatoxin chemotactic receptor; C5a-R; C5aR; CD antigen CD88
Gene ID	728.0
SwissProt ID	P21730.The antiserum was produced against synthesized peptide derived from human CD88/C5aR around the phosphorylation site of Ser338. AA range:301-350

Application

Dilution Ratio	IHC-P 1:100-1:300, ELISA 1:40000, IF-P/IF-F/ICC/IF 1:50-200
Molecular Weight	

Product Name: CD88 (phospho Ser338) Rabbit Polyclonal Antibody
Catalog #: APRab04410

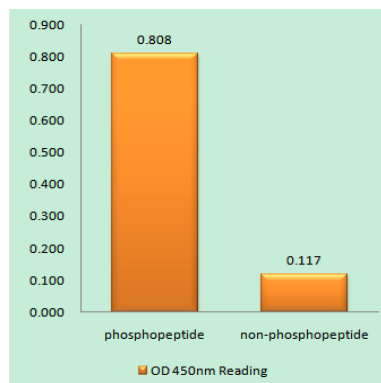
Background

function: Receptor for the chemotactic and inflammatory peptide anaphylatoxin C5a. This receptor stimulates chemotaxis, granule enzyme release and superoxide anion production.,PTM: Sulfation plays a critical role in the association of the receptor with C5a, but no significant role in the ability of the receptor to transduce a signal and mobilize calcium in response to a small peptide agonist.,similarity: Belongs to the G-protein coupled receptor 1 family.,function: Receptor for the chemotactic and inflammatory peptide anaphylatoxin C5a. This receptor stimulates chemotaxis, granule enzyme release and superoxide anion production.,PTM: Sulfation plays a critical role in the association of the receptor with C5a, but no significant role in the ability of the receptor to transduce a signal and mobilize calcium in response to a small peptide agonist.,similarity: Belongs to the G-protein coupled receptor 1 family.,

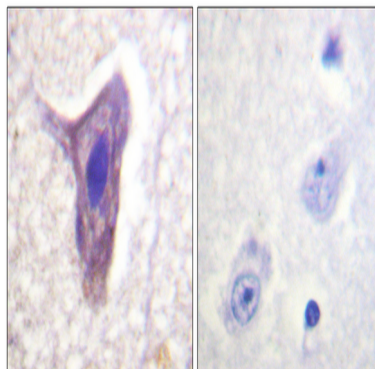
Research Area

Neuroactive ligand-receptor interaction; Complement and coagulation cascades;

Image Data



Enzyme-Linked Immunosorbent Assay (Phospho-ELISA) for Immunogen Phosphopeptide (Phospho-left) and Non-Phosphopeptide (Phospho-right), using CD88/C5aR (Phospho-Ser338) Antibody



Immunohistochemistry analysis of paraffin-embedded human brain, using CD88/C5aR (Phospho-Ser338) Antibody. The

**Product Name: CD88 (phospho Ser338) Rabbit
Polyclonal Antibody
Catalog #: APRab04410**

picture on the right is blocked with the phospho peptide.

Note

For research use only.