

Product Name: CD32 (phospho Tyr292) Rabbit Polyclonal Antibody
Catalog #: APRab04401

Summary

Production Name	CD32 (phospho Tyr292) Rabbit Polyclonal Antibody
Description	Rabbit Polyclonal Antibody
Host	Rabbit
Application	WB,ELISA
Reactivity	Human,Mouse,Rat

Performance

Conjugation	Unconjugated
Modification	Phospho Antibody
Isotype	IgG
Clonality	Polyclonal
Form	Liquid
Storage	Store at 4°C short term. Aliquot and store at -20°C long term. Avoid freeze/thaw cycles.
Buffer	Liquid in PBS containing 50% glycerol, 0.5% BSA and 0.02% New type preservative N.
Purification	Affinity purification

Immunogen

Gene Name	FCGR2B FCGR2B; CD32; FCG2; IGFR2; Low affinity immunoglobulin gamma Fc region receptor
Alternative Names	II-b; IgG Fc receptor II-b; CDw32; Fc-gamma RII-b; Fc-gamma-RIIb; FcRII-b; CD antigen CD32
Gene ID	2213.0
SwissProt ID	P31994. The antiserum was produced against synthesized peptide derived from human CD32 around the phosphorylation site of Tyr292. AA range:258-307

Application

Dilution Ratio	WB 1:500-1:2000, ELISA 1:10000.Not yet tested in other applications.
Molecular Weight	32kDa

Product Name: CD32 (phospho Tyr292) Rabbit Polyclonal Antibody
Catalog #: AP Rab04401

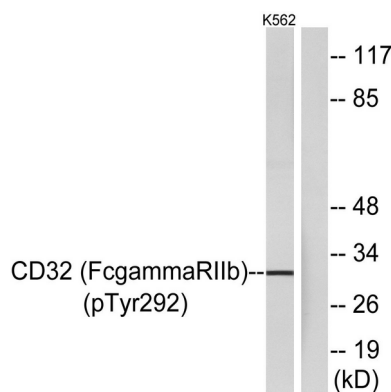
Background

The Fc fragment of IgG receptor IIb encoded by FCGR2B is a low affinity receptor for the Fc region of immunoglobulin gamma complexes. The encoded protein is involved in the phagocytosis of immune complexes and in the regulation of antibody production by B-cells. Variations in this gene may increase susceptibility to systemic lupus erythematosus (SLE). Several transcript variants encoding different isoforms have been found for this gene. immune response,

Research Area

B_Cell_Antigen;Fc gamma R-mediated phagocytosis;Systemic lupus erythematosus;

Image Data



Note

For research use only.