

**Product Name: Casein Kinase I α (phospho Tyr321)
Rabbit Polyclonal Antibody
Catalog #: APRab04364**

Summary

Production Name	Casein Kinase I α (phospho Tyr321) Rabbit Polyclonal Antibody
Description	Rabbit Polyclonal Antibody
Host	Rabbit
Application	WB,IHC-P,IF-P,IF-F,ICC/IF,ELISA
Reactivity	Human,Mouse,Rat

Performance

Conjugation	Unconjugated
Modification	Phospho Antibody
Isotype	IgG
Clonality	Polyclonal
Form	Liquid
Storage	Store at 4°C short term. Aliquot and store at -20°C long term. Avoid freeze/thaw cycles.
Buffer	Liquid in PBS containing 50% glycerol, 0.5% BSA and 0.02% New type preservative N.
Purification	Affinity purification

Immunogen

Gene Name	CSNK1A1
Alternative Names	CSNK1A1; Casein kinase I isoform alpha; CKI-alpha; CK1
Gene ID	1452.0
SwissProt ID	P48729.The antiserum was produced against synthesized peptide derived from human Casein Kinase I alpha around the phosphorylation site of Tyr321. AA range:287-336

Application

Dilution Ratio	WB 1:500-1:2000, IHC-P 1:100-1:300, ELISA 1:5000, IF-P/IF-F/ICC/IF 1:50-200
Molecular Weight	35kDa

Product Name: Casein Kinase Iα (phospho Tyr321)
Rabbit Polyclonal Antibody
Catalog #: APRab04364

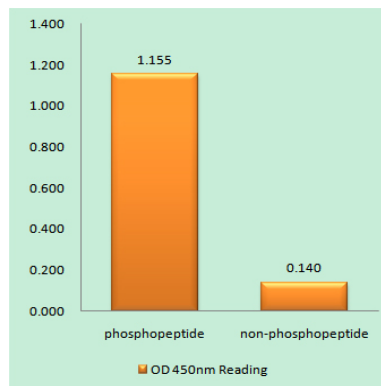
Background

catalytic activity:ATP + a protein = ADP + a phosphoprotein.,function:Casein kinases are operationally defined by their preferential utilization of acidic proteins such as caseins as substrates. It can phosphorylate a large number of proteins. Participates in Wnt signaling. Phosphorylates CTNNB1 on 'Ser-45',similarity:Belongs to the protein kinase superfamily.,similarity:Belongs to the protein kinase superfamily. CK1 Ser/Thr protein kinase family. Casein kinase I subfamily.,similarity:Contains 1 protein kinase domain.,subunit:Monomer. Interacts with the Axin complex.,catalytic activity:ATP + a protein = ADP + a phosphoprotein.,function:Casein kinases are operationally defined by their preferential utilization of acidic proteins such as caseins as substrates. It can phosphorylate a large number of proteins. Participates in Wnt signaling. Phosphorylates CTNNB1 on 'Ser-45',similarity:Belongs to the protein kinase superfamily.,similarity:Belongs to the protein kinase superfamily. CK1 Ser/Thr protein kinase family. Casein kinase I subfamily.,similarity:Contains 1 protein kinase domain.,subunit:Monomer. Interacts with the Axin complex.,

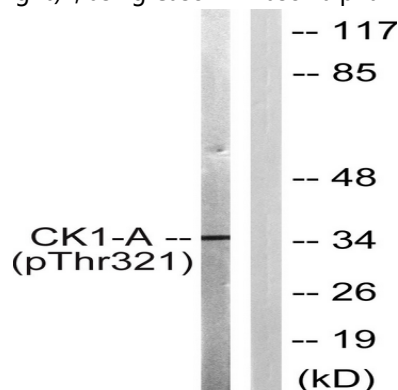
Research Area

WNT;WNT-T CELLHedgehog;

Image Data



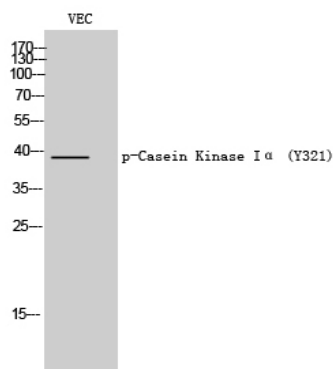
Enzyme-Linked Immunosorbent Assay (Phospho-ELISA) for Immunogen Phosphopeptide (Phospho-left) and Non-Phosphopeptide (Phospho-right), using Casein Kinase I alpha (Phospho-Tyr321) Antibody



**Product Name: Casein Kinase I α (phospho Tyr321)
Rabbit Polyclonal Antibody
Catalog #: APRab04364**



Western blot analysis of lysates from HUVEC cells, using Casein Kinase I alpha (Phospho-Tyr321) Antibody. The lane on the right is blocked with the phospho peptide.



Western Blot analysis of VEC cells using Phospho-Casein Kinase I α (Y321) Polyclonal Antibody

Note

For research use only.