

Product Name: Arrestin- β -1 (phospho Ser412) Rabbit Polyclonal Antibody
Catalog #: APRab04262



Summary

Production Name	Arrestin- β -1 (phospho Ser412) Rabbit Polyclonal Antibody
Description	Rabbit Polyclonal Antibody
Host	Rabbit
Application	WB,IHC-P,IF-P,IF-F,ICC/IF,ELISA
Reactivity	Human,Monkey

Performance

Conjugation	Unconjugated
Modification	Phospho Antibody
Isotype	IgG
Clonality	Polyclonal
Form	Liquid
Storage	Store at 4°C short term. Aliquot and store at -20°C long term. Avoid freeze/thaw cycles.
Buffer	Liquid in PBS containing 50% glycerol, 0.5% BSA and 0.02% New type preservative N.
Purification	Affinity purification

Immunogen

Gene Name	ARRB1
Alternative Names	ARRB1; ARR1; Beta-arrestin-1; Arrestin beta-1
Gene ID	408.0
SwissProt ID	P49407.The antiserum was produced against synthesized peptide derived from human Arrestin 1 around the phosphorylation site of Ser412. AA range:369-418

Application

Dilution Ratio	WB 1:500-1:2000, IHC-P 1:100-1:300, ELISA 1:10000, IF-P/IF-F/ICC/IF 1:50-200
Molecular Weight	47kDa

Product Name: Arrestin- β -1 (phospho Ser412) Rabbit Polyclonal Antibody
Catalog #: AP Rab04262



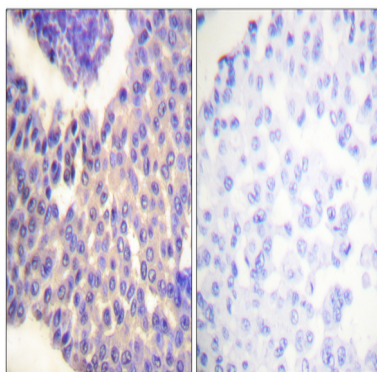
Background

Members of arrestin/beta-arrestin protein family are thought to participate in agonist-mediated desensitization of G-protein-coupled receptors and cause specific dampening of cellular responses to stimuli such as hormones, neurotransmitters, or sensory signals. Arrestin beta 1 is a cytosolic protein and acts as a cofactor in the beta-adrenergic receptor kinase (BARK) mediated desensitization of beta-adrenergic receptors. Besides the central nervous system, it is expressed at high levels in peripheral blood leukocytes, and thus the BARK/beta-arrestin system is believed to play a major role in regulating receptor-mediated immune functions. Alternatively spliced transcripts encoding different isoforms of arrestin beta 1 have been described. [provided by RefSeq, Jan 2011],function:Regulates beta-adrenergic receptor function. Beta-arrestins seem to bind phosphorylated beta-adrenergic receptors, thereby causing a significant impairment of their capacity to activate G(S) proteins.,online information:Arrestin entry,similarity:Belongs to the arrestin family.,

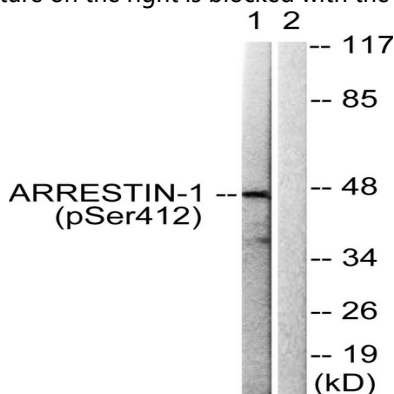
Research Area

MAPK_ERK_Growth;MAPK_G_Protein;Chemokine;Endocytosis;

Image Data



Immunohistochemistry analysis of paraffin-embedded human breast carcinoma, using Arrestin 1 (Phospho-Ser412) Antibody. The picture on the right is blocked with the phospho peptide.

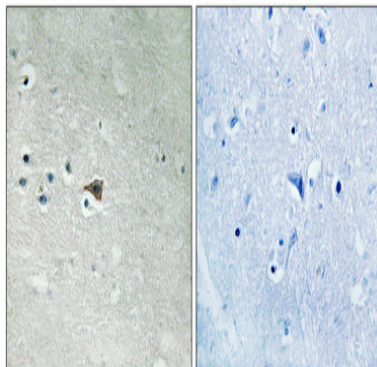


Western blot analysis of lysates from COS7 cells treated with Etoposide 25uM 60', using Arrestin 1 (Phospho-Ser412)

Product Name: Arrestin- β -1 (phospho Ser412) Rabbit Polyclonal Antibody
Catalog #: APRab04262



Antibody. The lane on the right is blocked with the phospho peptide.



Immunohistochemical analysis of paraffin-embedded Human brain. Antibody was diluted at 1:100 (4°,overnight) . High-pressure and temperature Tris-EDTA,pH8.0 was used for antigen retrieval. Negative contrl (right) obtaned from antibody was pre-absorbed by immunogen peptide.

Note

For research use only.