

**Product Name: Adducin  $\alpha/\beta$  (phospho Ser726/713)  
Rabbit Polyclonal Antibody  
Catalog #: APRab04204**

---

## Summary

<b>Production Name</b>	Adducin $\alpha/\beta$ (phospho Ser726/713) Rabbit Polyclonal Antibody
<b>Description</b>	Rabbit Polyclonal Antibody
<b>Host</b>	Rabbit
<b>Application</b>	WB,IHC-P,IF-P,IF-F,ICC/IF,ELISA
<b>Reactivity</b>	Human,Mouse,Rat

## Performance

<b>Conjugation</b>	Unconjugated
<b>Modification</b>	Phospho Antibody
<b>Isotype</b>	IgG
<b>Clonality</b>	Polyclonal
<b>Form</b>	Liquid
<b>Storage</b>	Store at 4°C short term. Aliquot and store at -20°C long term. Avoid freeze/thaw cycles.
<b>Buffer</b>	Liquid in PBS containing 50% glycerol, 0.5% BSA and 0.02% New type preservative N.
<b>Purification</b>	Affinity purification

## Immunogen

<b>Gene Name</b>	ADD1/ADD2
<b>Alternative Names</b>	ADD1; ADDA; Alpha-adducin; Erythrocyte adducin subunit alpha; ADD2; ADDB; Beta-adducin; Erythrocyte adducin subunit beta
<b>Gene ID</b>	118/119
<b>SwissProt ID</b>	P35611/P35612.The antiserum was produced against synthesized peptide derived from human ADD1 around the phosphorylation site of Ser726. AA range:688-737

## Application

<b>Dilution Ratio</b>	WB 1:500-1:2000, IHC-P 1:100-1:300, IF-P/IF-F/ICC/IF 1:200-1:1000, ELISA 1:40000.Not yet tested in other applications.
-----------------------	--

**Product Name: Adducin  $\alpha/\beta$  (phospho Ser726/713)**  
**Rabbit Polyclonal Antibody**  
**Catalog #: APRab04204**



---

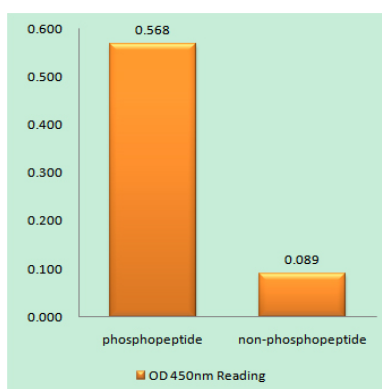
**Molecular Weight**      80kDa

## Background

adducin 1(ADD1) Homo sapiens    Adducins are a family of cytoskeleton proteins encoded by three genes (alpha, beta, gamma). Adducin is a heterodimeric protein that consists of related subunits, which are produced from distinct genes but share a similar structure. Alpha- and beta-adducin include a protease-resistant N-terminal region and a protease-sensitive, hydrophilic C-terminal region. Alpha- and gamma-adducins are ubiquitously expressed. In contrast, beta-adducin is expressed at high levels in brain and hematopoietic tissues. Adducin binds with high affinity to  $\text{Ca}^{2+}$ /calmodulin and is a substrate for protein kinases A and C. Alternative splicing results in multiple variants encoding distinct isoforms; however, not all variants have been fully described. [provided by RefSeq, Jul 2008],alternative products:Additional isoforms seem to exist,domain:Each subunit is comprised of three regions: a NH2-terminal protease-resistant globular head region, a short connecting subdomain, and a protease-sensitive tail region.,function:Membrane-cytoskeleton-associated protein that promotes the assembly of the spectrin-actin network. Binds to calmodulin.,PTM:The N-terminus is blocked.,similarity:Belongs to the aldolase class II family. Adducin subfamily.,subunit:Heterodimer of an alpha and a beta subunit or an alpha and a gamma subunit. Binds ROCK1.,tissue specificity:Expressed in all tissues. Found in much higher levels in reticulocytes than the beta subunit.,

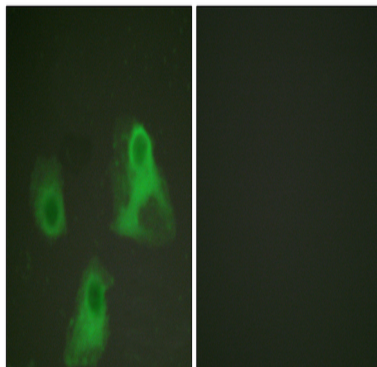
## Research Area

## Image Data

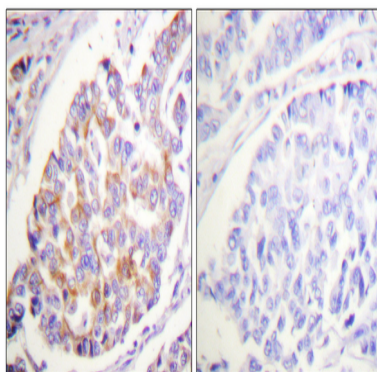


Enzyme-Linked Immunosorbent Assay (Phospho-ELISA) for Immunogen Phosphopeptide (Phospho-left) and Non-Phosphopeptide (Phospho-right) , using ADD1 (Phospho-Ser726) Antibody

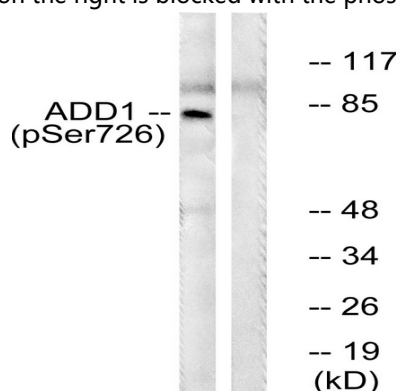
**Product Name: Adducin  $\alpha/\beta$  (phospho Ser726/713)**  
**Rabbit Polyclonal Antibody**  
**Catalog #: APRab04204**



Immunofluorescence analysis of HeLa cells, using ADD1 (Phospho-Ser726) Antibody. The picture on the right is blocked with the phospho peptide.

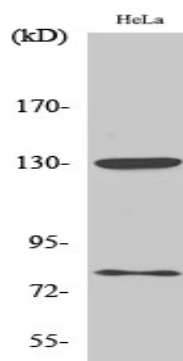


Immunohistochemistry analysis of paraffin-embedded human breast carcinoma, using ADD1 (Phospho-Ser726) Antibody. The picture on the right is blocked with the phospho peptide.

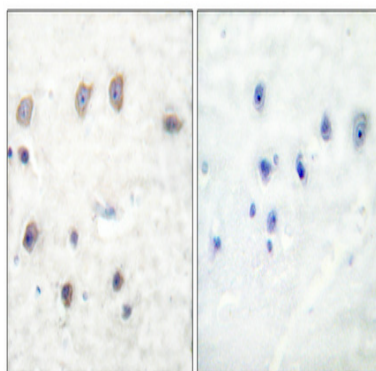


Western blot analysis of lysates from HeLa cells treated with Forskolin 40nM 30 ', using ADD1 (Phospho-Ser726) Antibody. The lane on the right is blocked with the phospho peptide.

**Product Name: Adducin  $\alpha/\beta$  (phospho Ser726/713)**  
**Rabbit Polyclonal Antibody**  
**Catalog #: APRab04204**



Western Blot analysis of various cells using Phospho-Adducin  $\alpha/\beta$  (S726/713) Polyclonal Antibody diluted at 1: 1000



Immunohistochemical analysis of paraffin-embedded Human breast cancer. Antibody was diluted at 1:100 (4°, overnight) . High-pressure and temperature Tris-EDTA, pH 8.0 was used for antigen retrieval. Negative control (right) obtained from antibody was pre-absorbed by immunogen peptide.

## Note

For research use only.