

**Product Name: IL-6 Rabbit Polyclonal Antibody**  
**Catalog #: APRab03851**



## Summary

<b>Production Name</b>	IL-6 Rabbit Polyclonal Antibody
<b>Description</b>	Rabbit Polyclonal Antibody
<b>Host</b>	Rabbit
<b>Application</b>	WB,IHC-P,ELISA
<b>Reactivity</b>	Human

## Performance

<b>Conjugation</b>	Unconjugated
<b>Modification</b>	Unmodified
<b>Isotype</b>	IgG
<b>Clonality</b>	Polyclonal
<b>Form</b>	Liquid
<b>Storage</b>	Store at 4°C short term. Aliquot and store at -20°C long term. Avoid freeze/thaw cycles.
<b>Buffer</b>	Liquid in PBS containing 50% glycerol, 0.5% BSA and 0.02% sodium azide, pH 7.3.
<b>Purification</b>	Affinity Purification

## Immunogen

<b>Gene Name</b>	IL6
<b>Alternative Names</b>	IL6; IFNB2; Interleukin-6; IL-6; B-cell stimulatory factor 2; BSF-2; CTL differentiation factor; CDF; Hybridoma growth factor; Interferon beta-2; IFN-beta-2
<b>Gene ID</b>	3569
<b>SwissProt ID</b>	P05231.

## Application

<b>Dilution Ratio</b>	WB: 1:500-1:1000 IHC: 1:50-1:100 ELISA: 1:10000
<b>Molecular Weight</b>	Calculated MW: 24 kDa; Observed MW: 24 kDa

## Background

**Product Name: IL-6 Rabbit Polyclonal Antibody**  
**Catalog #: APRab03851**

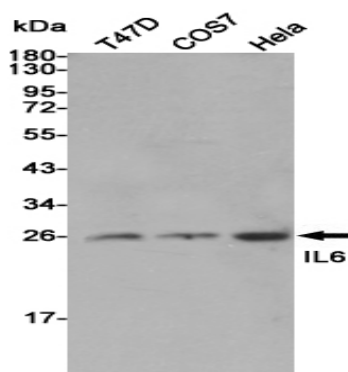


Interleukine 6 (IL-6) is a cytokine produced primarily by stimulated monocytes, fibroblasts and epithelial cells. It has a wide variety of biological functions through activating a cell surface signaling assembly composed of IL6, IL6RA, and the shared signaling receptor gp130. The cytokine plays an essential role in the final differentiation of b-cells into Igsecreting cells, and induces myeloma, plasmacytoma growth, nerve cells differentiations. In addition, IL-6 is an important regulator of acute phase reaction.

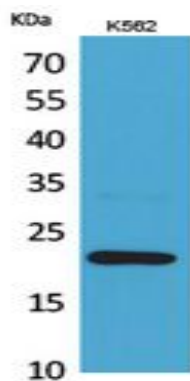
## Research Area

Immunology

## Image Data

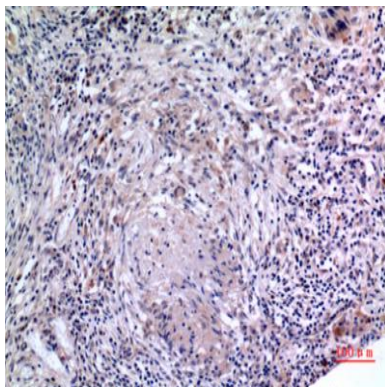


Western blot analysis of IL-6 in T47D, COS7 and HeLa lysates using IL-6 antibody.

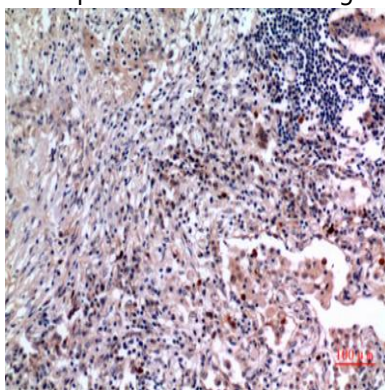


Western blot analysis of IL-6 in K562 lysates using IL-6 antibody.

**Product Name: IL-6 Rabbit Polyclonal Antibody**  
**Catalog #: APRab03851**



Immunohistochemistry analysis of paraffin-embedded Human lung using IL-6 antibody. High-pressure and temperature Sodium Citrate pH 6.0 was used for antigen retrieval.



Immunohistochemistry analysis of paraffin-embedded Human lung using IL-6 antibody. High-pressure and temperature Sodium Citrate pH 6.0 was used for antigen retrieval.

## **Note**

For research use only.