

Product Name: Phospho-STAT3 (Ser727) Rabbit Polyclonal Antibody
Catalog #: APRab03823

Summary

Production Name	Phospho-STAT3 (Ser727) Rabbit Polyclonal Antibody
Description	Rabbit Polyclonal Antibody
Host	Rabbit
Application	WB,IHC-P,ICC/IF
Reactivity	Human,Mouse,Rat

Performance

Conjugation	Unconjugated
Modification	Phosphorylated
Isotype	IgG
Clonality	Polyclonal
Form	Liquid
Storage	Store at 4°C short term. Aliquot and store at -20°C long term. Avoid freeze/thaw cycles.
Buffer	Liquid in PBS containing 50% glycerol, 0.5% BSA and 0.02% sodium azide, pH 7.3.
Purification	Affinity Chromatography

Immunogen

Gene Name	STAT3
Alternative Names	STAT3; APRE; Signal transducer and activator of transcription 3; Acute-phase response factor
Gene ID	6774
SwissProt ID	P40763.

Application

Dilution Ratio	WB: 1:500-1:1000 IHC: 1:50-1:100 IF: 1:50-1:200
Molecular Weight	Calculated MW: 88 kDa; Observed MW: 88 kDa

Product Name: Phospho-STAT3 (Ser727) Rabbit Polyclonal Antibody
Catalog #: APRab03823

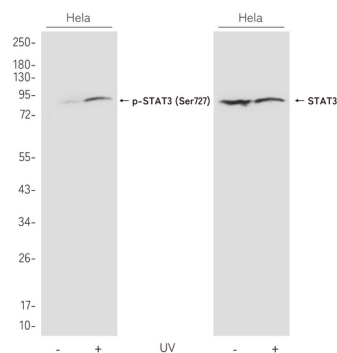
Background

The protein encoded by this gene is a member of the STAT protein family. In response to cytokines and growth factors, STAT family members are phosphorylated by the receptor associated kinases, and then form homo- or heterodimers that translocate to the cell nucleus where they act as transcription activators.

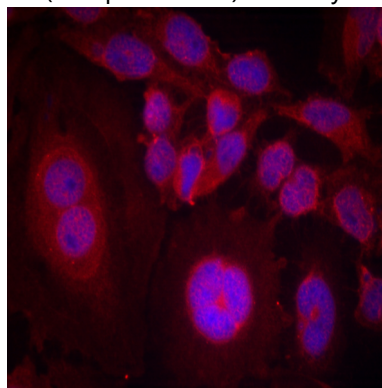
Research Area

Signal Transduction

Image Data

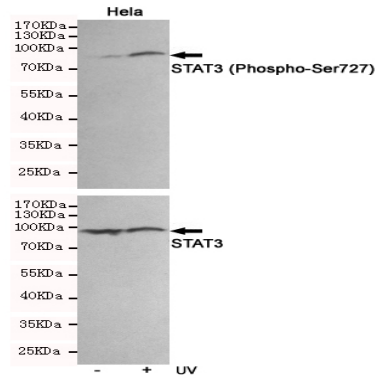


Western blot analysis of Phospho-STAT3 (Ser727) in HeLa and HepG2 lysates untreated or treated with PMA using STAT3 (Phospho-Ser727) antibody.

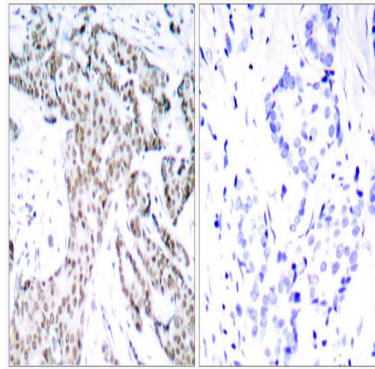


Immunofluorescence analysis of Phospho-STAT3 (Ser727) in HeLa using STAT3 (Phospho-Ser727) antibody.

**Product Name: Phospho-STAT3 (Ser727) Rabbit
Polyclonal Antibody
Catalog #: APRab03823**



Western blot analysis of Phospho-STAT3 (Ser727) in HeLa lysates untreated or treated with UV, using STAT3 (Phospho-Ser727) antibody(upper) or p38 MAPK antibody(lower).



Immunohistochemistry analysis of paraffin-embedded Human breast carcinoma tissue using STAT3 (Phospho-Ser727) antibody High-pressure and temperature Sodium Citrate pH 6.0 was used for antigen retrieval. Sample with blocking peptide on the right.

Note

For research use only.