

Product Name: Ferritin Heavy Chain Rabbit Polyclonal Antibody
Catalog #: APRab03725



Summary

Production Name	Ferritin Heavy Chain Rabbit Polyclonal Antibody
Description	Rabbit Polyclonal Antibody
Host	Rabbit
Application	WB, ICC/IF
Reactivity	Human, Mouse, Rat

Performance

Conjugation	Unconjugated
Modification	Unmodified
Isotype	IgG
Clonality	Polyclonal
Form	Liquid
Storage	Store at 4°C short term. Aliquot and store at -20°C long term. Avoid freeze/thaw cycles.
Buffer	Rabbit IgG in phosphate buffered saline , pH 7.4, 150mM NaCl, 0.02% sodium azide and 50% glycerol.
Purification	Affinity Chromatography

Immunogen

Gene Name	FTH1
Alternative Names	FTH1; FTH; FTHL6; OK/SW-cl.84; PIG15; Ferritin heavy chain; Ferritin H subunit; Cell proliferation-inducing gene 15 protein
Gene ID	2495
SwissProt ID	P02794.

Application

Dilution Ratio	WB: 1:500-1:1000 IF: 1:50-1:200
Molecular Weight	Calculated MW: 21 kDa; Observed MW: 21 kDa

Product Name: Ferritin Heavy Chain Rabbit Polyclonal Antibody
Catalog #: AP Rab03725



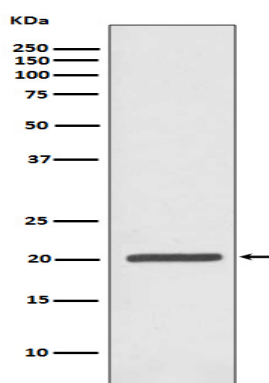
Background

The assembled ferritin molecule, often referred to as a nanocage, can store up to 4,500 atoms of iron. It forms a holoenzyme of ~450 kDa, consisting of 24 subunits made up of two types of polypeptide chains: ferritin heavy chain and ferritin light chain, each having unique functions. Ferritin heavy chains catalyze the first step in iron storage, the oxidation of Fe(II), whereas ferritin light chains promote the nucleation of ferrihydrite, enabling storage of Fe(III).

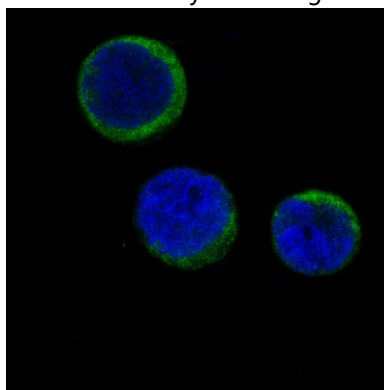
Research Area

Neuroscience

Image Data



Western blot analysis of Ferritin in Jurkat lysates using Ferritin Heavy Chain antibody.



Immunofluorescence analysis of Ferritin Heavy Chain in Jurkat using Ferritin antibody.

Note

For research use only.