

Product Name: TREM2 Rabbit Polyclonal Antibody
Catalog #: APRab03407



Summary

Production Name	TREM2 Rabbit Polyclonal Antibody
Description	Rabbit Polyclonal Antibody
Host	Rabbit
Application	WB,IHC-P,ICC/IF
Reactivity	Human,Mouse,Rat

Performance

Conjugation	Unconjugated
Modification	Unmodified
Isotype	IgG
Clonality	Polyclonal
Form	Liquid
Storage	Store at 4°C short term. Aliquot and store at -20°C long term. Avoid freeze/thaw cycles.
Buffer	Liquid in PBS containing 50% glycerol, 0.5% BSA and 0.02% sodium azide, pH 7.3.
Purification	Affinity Purification

Immunogen

Gene Name	TREM2
Alternative Names	TREM2; TREM-2; Trem2a; Trem2b; Trem2c; triggering receptor expressed on myeloid cells 2
Gene ID	54209
SwissProt ID	Q9NZC2.

Application

Dilution Ratio	WB: 1:500-1:1000 IHC: 1:50-1:100 IF: 1:50-1:200
Molecular Weight	Calculated MW: 25 kDa; Observed MW: 25, 35-50 kDa

Background

Product Name: TREM2 Rabbit Polyclonal Antibody
Catalog #: APRab03407

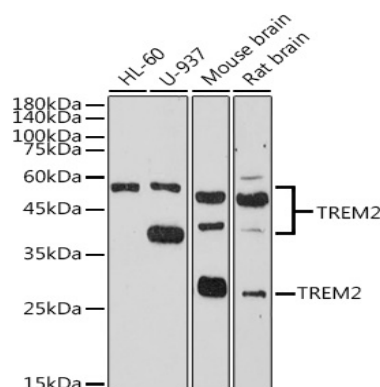


This gene encodes a membrane protein that forms a receptor signaling complex with the TYRO protein tyrosine kinase binding protein. The encoded protein functions in immune response and may be involved in chronic inflammation by triggering the production of constitutive inflammatory cytokines. Defects in this gene are a cause of polycystic lipomembranous osteodysplasia with sclerosing leukoencephalopathy (PLOS). Alternative splicing results in multiple transcript variants encoding different isoforms.

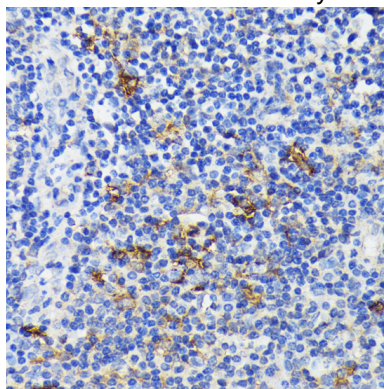
Research Area

Immunology

Image Data

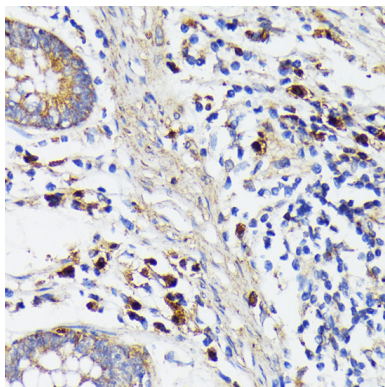


Western blot analysis of TREM2 in various cell lines lysates using TREM2 antibody.

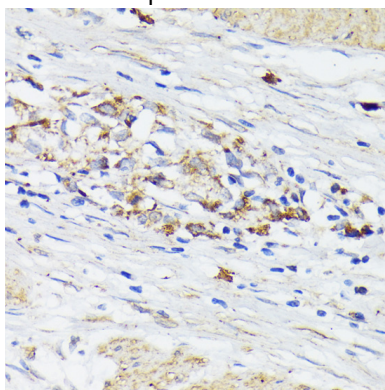


Immunohistochemistry analysis of paraffin-embedded Human tonsil using TREM2 antibody. High-pressure and temperature Sodium Citrate pH 6.0 was used for antigen retrieval.

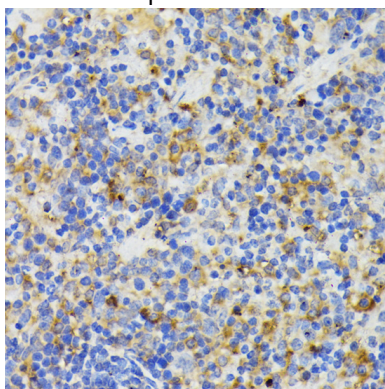
Product Name: TREM2 Rabbit Polyclonal Antibody
Catalog #: APRab03407



Immunohistochemistry analysis of paraffin-embedded Human colon carcinoma using TREM2 antibody. High-pressure and temperature Sodium Citrate pH 6.0 was used for antigen retrieval.

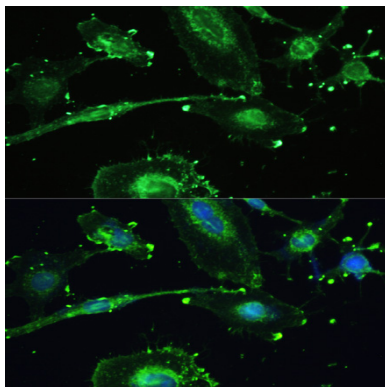


Immunohistochemistry analysis of paraffin-embedded Human gastric cancer using TREM2 antibody. High-pressure and temperature Sodium Citrate pH 6.0 was used for antigen retrieval.



Immunohistochemistry analysis of paraffin-embedded mouse spleen using TREM2 antibody. High-pressure and temperature Sodium Citrate pH 6.0 was used for antigen retrieval.

Product Name: TREM2 Rabbit Polyclonal Antibody
Catalog #: APRab03407



Immunofluorescence analysis of TREM2 in U251MG using TREM2 antibody, and DAPI (blue).

Note

For research use only.