

**Product Name: GPR91 Rabbit Polyclonal Antibody**  
**Catalog #: APRab03404**



## Summary

<b>Production Name</b>	GPR91 Rabbit Polyclonal Antibody
<b>Description</b>	Rabbit Polyclonal Antibody
<b>Host</b>	Rabbit
<b>Application</b>	WB, ICC/IF, ELISA
<b>Reactivity</b>	Human, Mouse, Rat

## Performance

<b>Conjugation</b>	Unconjugated
<b>Modification</b>	Unmodified
<b>Isotype</b>	IgG
<b>Clonality</b>	Polyclonal
<b>Form</b>	Liquid
<b>Storage</b>	Store at 4°C short term. Aliquot and store at -20°C long term. Avoid freeze/thaw cycles.
<b>Buffer</b>	Liquid in PBS containing 50% glycerol, 0.5% BSA and 0.02% sodium azide, pH 7.3.
<b>Purification</b>	Affinity Chromatography

## Immunogen

<b>Gene Name</b>	SUCNR1
<b>Alternative Names</b>	GPR91
<b>Gene ID</b>	56670
<b>SwissProt ID</b>	Q9BXA5.

## Application

<b>Dilution Ratio</b>	WB: 1:500-1:1000 IF: 1:50-1:200 ELISA: 1:10000
<b>Molecular Weight</b>	Calculated MW: 39 kDa; Observed MW: 39 kDa

## Background

Receptor for succinate.

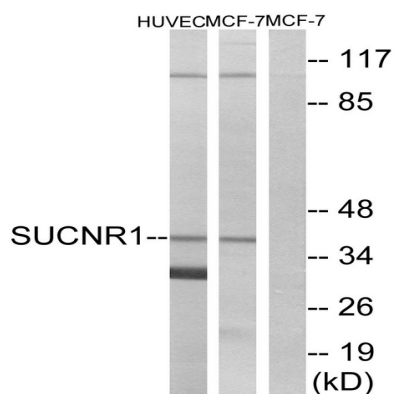
**Product Name: GPR91 Rabbit Polyclonal Antibody**  
**Catalog #: APRab03404**



## Research Area

Signal Transduction

## Image Data



Western blot analysis of GPR91 in HUVEC and MCF-7 lysates using SUCNR1 antibody. The lane on the right is blocked with the synthesized peptide.

## Note

For research use only.