

**Product Name: RPL7 Rabbit Polyclonal Antibody**  
**Catalog #: APRab03399**



## Summary

<b>Production Name</b>	RPL7 Rabbit Polyclonal Antibody
<b>Description</b>	Rabbit Polyclonal Antibody
<b>Host</b>	Rabbit
<b>Application</b>	WB,IHC-P,ELISA
<b>Reactivity</b>	Human,Mouse,Rat

## Performance

<b>Conjugation</b>	Unconjugated
<b>Modification</b>	Unmodified
<b>Isotype</b>	IgG
<b>Clonality</b>	Polyclonal
<b>Form</b>	Liquid
<b>Storage</b>	Store at 4°C short term. Aliquot and store at -20°C long term. Avoid freeze/thaw cycles.
<b>Buffer</b>	Liquid in PBS containing 50% glycerol, 0.5% BSA and 0.02% sodium azide, pH 7.3.
<b>Purification</b>	Affinity Chromatography

## Immunogen

<b>Gene Name</b>	RPL7
<b>Alternative Names</b>	L7; humL7-1
<b>Gene ID</b>	6129
<b>SwissProt ID</b>	P18124.

## Application

<b>Dilution Ratio</b>	WB: 1:500-1:1000 IHC: 1:50-1:100 ELISA: 1:10000
<b>Molecular Weight</b>	Calculated MW: 29 kDa; Observed MW: 32 kDa

## Background

Component of the large ribosomal subunit (PubMed:12962325). Binds to G-rich structures in 28S rRNA and in mRNAs.

**Product Name: RPL7 Rabbit Polyclonal Antibody**  
**Catalog #: APRab03399**

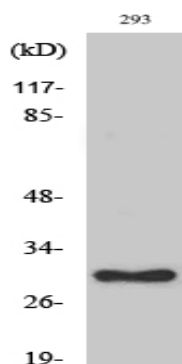


Plays a regulatory role in the translation apparatus; inhibits cell-free translation of mRNAs.

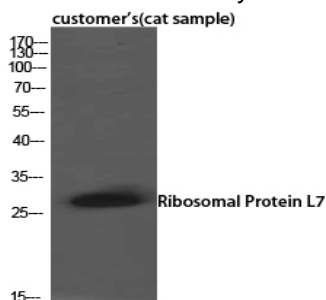
## Research Area

Epigenetics and Nuclear Signaling

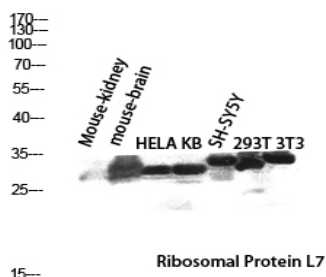
## Image Data



Western blot analysis of RPL7 in various lysates using RPL7 antibody.

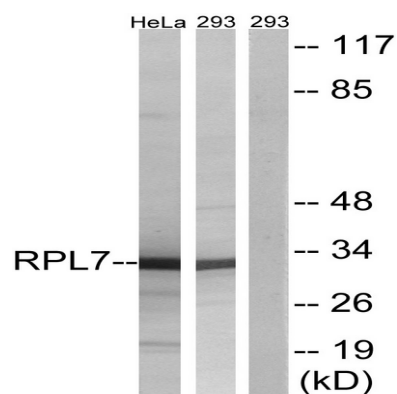


Western blot analysis of RPL7 in cat sample lysates using Ribosomal Protein L7 antibody.

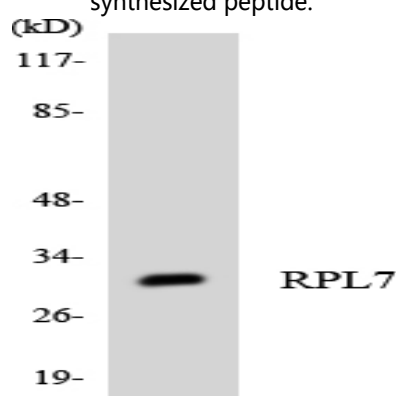


Western blot analysis of RPL7 in mouse kidney, mouse brain, HELA, KB, SH-SY5Y, 293T and 3T3 lysates using Ribosomal Protein L7 antibody.

**Product Name: RPL7 Rabbit Polyclonal Antibody**  
**Catalog #: APRab03399**



Western blot analysis of RPL7 in 293 and HeLa lysates using RPL7 antibody. The lane on the right is blocked with the synthesized peptide.



Western blot analysis of PL7 in K562 using RPL7 antibody.

## Note

For research use only.