

Summary

Production Name	Fascin Rabbit Polyclonal Antibody
Description	Rabbit Polyclonal Antibody
Host	Rabbit
Application	WB,IHC-F,IHC-P,ICC/IF,FC,IP
Reactivity	Human,Mouse,Rat,Monkey

Performance

Conjugation	Unconjugated
Modification	Unmodified
Isotype	IgG
Clonality	Polyclonal
Form	Liquid
Storage	Store at 4°C short term. Aliquot and store at -20°C long term. Avoid freeze/thaw cycles.
Buffer	50mM Tris-Glycine(pH 7.4), 0.15M NaCl, 40% Glycerol, 0.01% Sodium azide and 0.05% BSA
Purification	Affinity Purification

Immunogen

Gene Name	FSCN1
Alternative Names	55 kDa actin bundling protein; Actin bundling protein; FAN1; Fascin 1; Fascin; Singed (Drosophila) like (sea urchin fascin homolog like); Fascin homolog 1; Fascin
Gene ID	6624
SwissProt ID	Q16658.

Application

Dilution Ratio	WB: 1:500-1:1000 IHC: 1:50-1:100 IF: 1:50-1:200 IP: 1:20 FC: 1:50-1:100
Molecular Weight	Calculated MW: 55 kDa; Observed MW: 55 kDa

Product Name: Fascin Rabbit Polyclonal Antibody
Catalog #: APRab01395



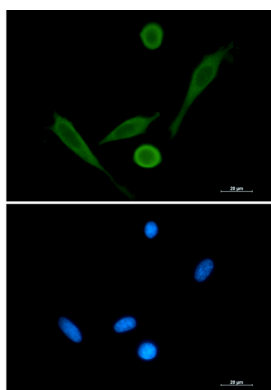
Background

Promotes cross-linkage of parallel actin filaments during the formation of cell protrusions (lamellipodia and filopodia), and therefore plays an important role in regulating cell migration. It has been reported that fascin may also regulate filopodia formation by a mechanism independent of its actin-bundling functions, though less is known about this mechanism of action.

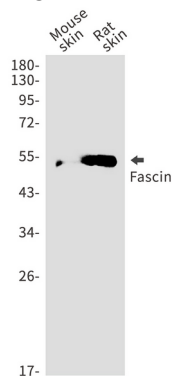
Research Area

Cell Biology

Image Data

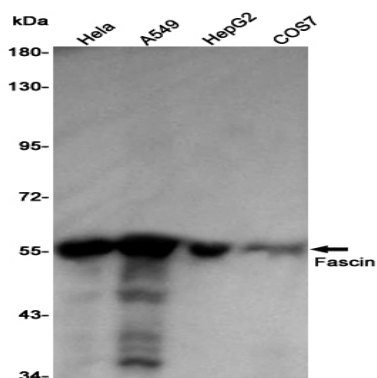


Immunocytochemistry analysis of Fascin (green) in 3T3 using Fascin antibody, and DAPI (blue).

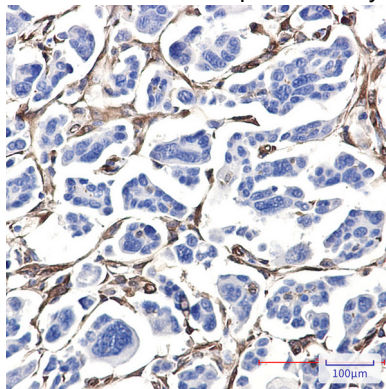


Western blot analysis of Fascin in mouse skin, rat skin lysates using Fascin antibody.

Product Name: Fascin Rabbit Polyclonal Antibody
Catalog #: APRab01395



Western blot analysis of Fascin in HeLa, A549, HepG2, COS7 lysates using Fascin antibody



Immunohistochemistry analysis of paraffin-embedded Human Cholangiocarcinoma using Fascin antibody. High-pressure and temperature Sodium Citrate pH 6.0 was used for antigen retrieval.

Note

For research use only.