

Product Name: Smad2/3 Rabbit Polyclonal Antibody
Catalog #: APRab01392



Summary

Production Name	Smad2/3 Rabbit Polyclonal Antibody
Description	Rabbit Polyclonal Antibody
Host	Rabbit
Application	WB, ICC/IF, FC, IP, ChIP
Reactivity	Human, Mouse, Rat

Performance

Conjugation	Unconjugated
Modification	Unmodified
Isotype	IgG
Clonality	Polyclonal
Form	Liquid
Storage	Store at 4°C short term. Aliquot and store at -20°C long term. Avoid freeze/thaw cycles.
Buffer	50mM Tris-Glycine(pH 7.4), 0.15M NaCl, 40% Glycerol, 0.01% Sodium azide and 0.05% BSA
Purification	Affinity Purification

Immunogen

Gene Name	SMAD2 SMAD2; MADH2; MADR2; MAD homolog 2; M hMAD-2; SMAD family member 2;
Alternative Names	SMAD 2; Smad2; hSMAD2; SMAD3; MADH3; hMAD-3; JV15-2; SMAD family member 3; SMAD 3; Smad3; hSMAD3; smad2/3; smad2+3
Gene ID	4087
SwissProt ID	Q15796.

Application

Dilution Ratio	WB: 1:500-1:1000 IF: 1:50-1:200 IP: 1:20 FC: 1:50-1:100 ChIP: 1:20
Molecular Weight	Calculated MW: 52 kDa; Observed MW: 52,60 kDa

Product Name: Smad2/3 Rabbit Polyclonal Antibody
Catalog #: APRab01392



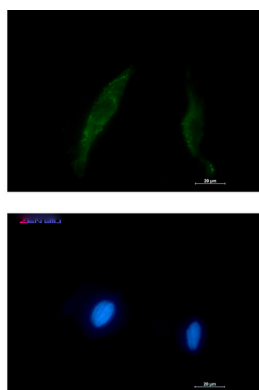
Background

The protein encoded by this gene belongs to the SMAD, a family of proteins similar to the gene products of the *Drosophila* gene 'mothers against decapentaplegic' (Mad) and the *C. elegans* gene Sma. SMAD proteins are signal transducers and transcriptional modulators that mediate multiple signaling pathways.

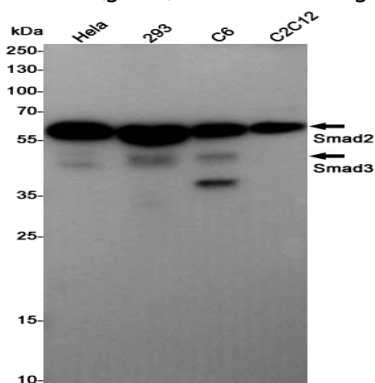
Research Area

Signal Transduction

Image Data



Immunocytochemistry analysis of Smad2/3 (green) in HT-1080 using Smad2/3 antibody, and DAPI (blue).



Western blot analysis of Smad2/3 in Hela, 293, C6, C2C12 lysates using Smad2/3 antibody.

Note

For research use only.