

Product Name: RhoA/B/C Rabbit Polyclonal Antibody
Catalog #: APRab01372



Summary

Production Name	RhoA/B/C Rabbit Polyclonal Antibody
Description	Rabbit Polyclonal Antibody
Host	Rabbit
Application	WB,IHC-F,IHC-P,ICC/IF,FC
Reactivity	Human

Performance

Conjugation	Unconjugated
Modification	Unmodified
Isotype	IgG
Clonality	Polyclonal
Form	Liquid
Storage	Store at 4°C short term. Aliquot and store at -20°C long term. Avoid freeze/thaw cycles.
Buffer	50mM Tris-Glycine(pH 7.4), 0.15M NaCl, 40% Glycerol, 0.01% Sodium azide and 0.05% BSA
Purification	Affinity Purification

Immunogen

Gene Name	RHOA/RHOB/RHOC
Alternative Names	ARH12; ARH6; ARH9; ARHA; ARHA2; H12; RHO12; Transforming protein RhoA; RHOA; RHOB; RHOC
Gene ID	387/388/389
SwissProt ID	P61586/P62745/P08134.

Application

Dilution Ratio	WB: 1:500-1:1000 IHC: 1:50-1:100 IF: 1:50-1:200 FC: 1:50-1:100
Molecular Weight	Calculated MW: 22 kDa; Observed MW: 22 kDa

Product Name: RhoA/B/C Rabbit Polyclonal Antibody
Catalog #: APRab01372



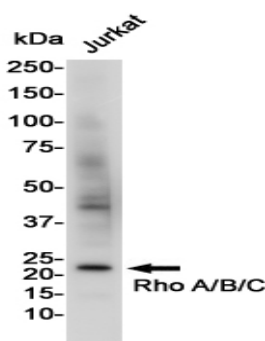
Background

RhoA, RhoB, RhoC is a small G protein of the Rho family. Regulates a signal transduction pathway linking plasma membrane receptors to the assembly of focal adhesions and actin stress fibers. The three mammalian Rho proteins (A, B and C) are approximately 30% homologous to Ras and are expressed in a wide range of cell types. Both Ras p21 and Rho p21, as well as other members of the Ras superfamily, contain a carboxy terminal CAAX sequence (C, cysteine; A, aliphatic amino acid; X, any amino acid) which in the case of Ras has been shown to be essential for correct localization and function.

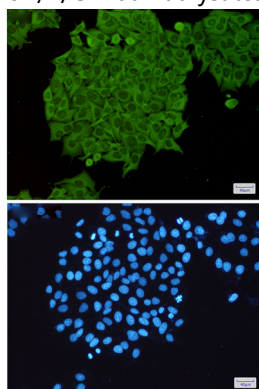
Research Area

Signal Transduction

Image Data

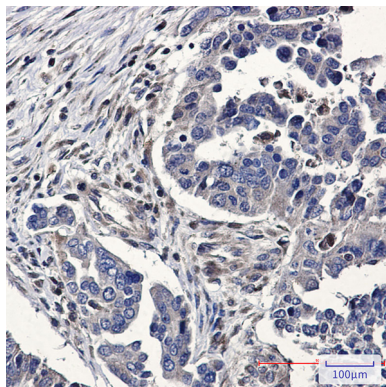


Western blot analysis of RhoA/B/C in Jurkat lysates using RhoA/B/C antibody.



Immunocytochemistry analysis of Rho A/B/C (green) in HeLa using Rho A/B/C antibody, and DAPI (blue)

Product Name: RhoA/B/C Rabbit Polyclonal Antibody
Catalog #: APRab01372



Immunohistochemistry analysis of paraffin-embedded Human Cholangiocarcinoma using RhoA/B/C antibody. High-pressure and temperature Sodium Citrate pH 6.0 was used for antigen retrieval.

Note

For research use only.