

**Product Name: Stathmin 1 Rabbit Polyclonal Antibody**  
**Catalog #: APRab01364**



## Summary

<b>Production Name</b>	Stathmin 1 Rabbit Polyclonal Antibody
<b>Description</b>	Rabbit Polyclonal Antibody
<b>Host</b>	Rabbit
<b>Application</b>	WB,IHC-P,FC,IP
<b>Reactivity</b>	Human,Rat

## Performance

<b>Conjugation</b>	Unconjugated
<b>Modification</b>	Unmodified
<b>Isotype</b>	IgG
<b>Clonality</b>	Polyclonal
<b>Form</b>	Liquid
<b>Storage</b>	Store at 4°C short term. Aliquot and store at -20°C long term. Avoid freeze/thaw cycles.
<b>Buffer</b>	50mM Tris-Glycine(pH 7.4), 0.15M NaCl, 40% Glycerol, 0.01% Sodium azide and 0.05% BSA
<b>Purification</b>	Affinity Purification

## Immunogen

<b>Gene Name</b>	STMN1
<b>Alternative Names</b>	STMN1; C1orf215; LAP18; OP18; Stathmin; Leukemia-associated phosphoprotein p18; Metablastin; Oncoprotein 18; Op18; Phosphoprotein p19; pp19; ProsoLin; Protein Pr22; pp17
<b>Gene ID</b>	3925
<b>SwissProt ID</b>	P16949.

## Application

<b>Dilution Ratio</b>	WB: 1:500-1:1000 IHC: 1:50-1:100 IP: 1:20 FC: 1:50-1:100
<b>Molecular Weight</b>	Calculated MW: 17 kDa; Observed MW: 17 kDa

**Product Name: Stathmin 1 Rabbit Polyclonal Antibody**  
**Catalog #: APRab01364**



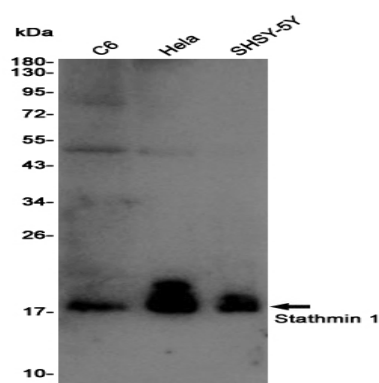
## Background

Involved in the regulation of the microtubule (MT) filament system by destabilizing microtubules. Prevents assembly and promotes disassembly of microtubules. Phosphorylation at Ser-16 may be required for axon formation during neurogenesis. Involved in the control of the learned and innate fear.

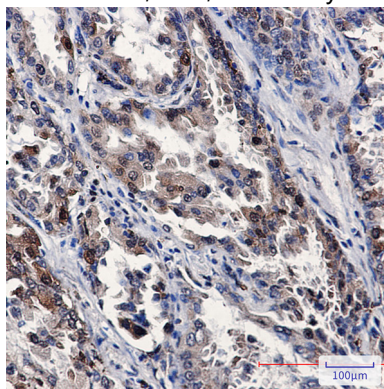
## Research Area

Neuroscience

## Image Data



Western blot analysis of Stathmin 1 in C6, HeLa, SH-SY5Y lysates using Stathmin 1 antibody.



Immunohistochemistry analysis of paraffin-embedded Human lung cancer using Stathmin 1 antibody. High-pressure and temperature Sodium Citrate pH 6.0 was used for antigen retrieval.

## Note

For research use only.