

**Product Name: SP1 Rabbit Polyclonal Antibody**  
**Catalog #: APRab01339**

---

## Summary

<b>Production Name</b>	SP1 Rabbit Polyclonal Antibody
<b>Description</b>	Rabbit Polyclonal Antibody
<b>Host</b>	Rabbit
<b>Application</b>	WB,IHC-P,ICC/IF
<b>Reactivity</b>	Human

## Performance

<b>Conjugation</b>	Unconjugated
<b>Modification</b>	Unmodified
<b>Isotype</b>	IgG
<b>Clonality</b>	Polyclonal
<b>Form</b>	Liquid
<b>Storage</b>	Store at 4°C short term. Aliquot and store at -20°C long term. Avoid freeze/thaw cycles.
<b>Buffer</b>	Rabbit IgG in phosphate buffered saline , pH 7.4, 150mM NaCl, 0.02% sodium azide and 50% glycerol.
<b>Purification</b>	Affinity Chromatography

## Immunogen

<b>Gene Name</b>	SP1
<b>Alternative Names</b>	SP1; TSFP1; Transcription factor Sp1
<b>Gene ID</b>	6667
<b>SwissProt ID</b>	P08047.

## Application

<b>Dilution Ratio</b>	WB: 1:500-1:1000 IHC: 1:50-1:100 IF: 1:50-1:200
<b>Molecular Weight</b>	Calculated MW: 81 kDa; Observed MW: 90 kDa

## Background

SP1 is a transcription factor of the Sp1 C2H2-type zinc-finger protein family. Phosphorylated and activated by MAPK.

**Product Name: SP1 Rabbit Polyclonal Antibody**  
**Catalog #: APRab01339**

---

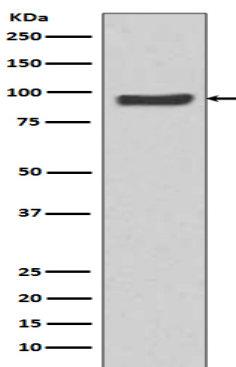


Dephosphorylation by PTEN inhibits DNA binding. Binds to p38 in the nucleus.

## Research Area

Epigenetics and Nuclear Signaling

## Image Data



Western blot analysis of SP1 in HeLa lysates using SP1 antibody.

## Note

For research use only.