

**Product Name: IKK beta Rabbit Polyclonal Antibody**  
**Catalog #: APRab01338**



## Summary

<b>Production Name</b>	IKK beta Rabbit Polyclonal Antibody
<b>Description</b>	Rabbit Polyclonal Antibody
<b>Host</b>	Rabbit
<b>Application</b>	WB,IHC-P,ICC/IF
<b>Reactivity</b>	Human,Mouse,Rat

## Performance

<b>Conjugation</b>	Unconjugated
<b>Modification</b>	Unmodified
<b>Isotype</b>	IgG
<b>Clonality</b>	Polyclonal
<b>Form</b>	Liquid
<b>Storage</b>	Store at 4°C short term. Aliquot and store at -20°C long term. Avoid freeze/thaw cycles.
<b>Buffer</b>	Rabbit IgG in phosphate buffered saline , pH 7.4, 150mM NaCl, 0.02% sodium azide and 50% glycerol.
<b>Purification</b>	Affinity Chromatography

## Immunogen

<b>Gene Name</b>	IKBKB IKBKB; IKKB; Inhibitor of nuclear factor kappa-B kinase subunit beta; I-kappa-B-kinase
<b>Alternative Names</b>	beta; IKK-B; IKK-beta; Ikbkb; I-kappa-B kinase 2; IKK2; Nuclear factor NF-kappa-B inhibitor kinase beta; NFKBKB
<b>Gene ID</b>	3551
<b>SwissProt ID</b>	O14920.

## Application

<b>Dilution Ratio</b>	WB: 1:500-1:1000 IHC: 1:50-1:100 IF: 1:50-1:200
<b>Molecular Weight</b>	Calculated MW: 87 kDa; Observed MW: 87 kDa

**Product Name: IKK beta Rabbit Polyclonal Antibody**  
**Catalog #: APRab01338**



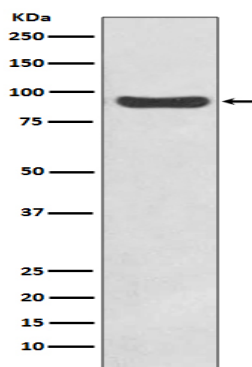
## Background

The NF- $\kappa$ B/Rel transcription factors are present in the cytosol in an inactive state, complexed with the inhibitory I $\kappa$ B proteins (1-3). Most agents that activate NF- $\kappa$ B do so through a common pathway based on phosphorylation-induced, proteasome-mediated degradation of I $\kappa$ B (3-7). The key regulatory step in this pathway involves activation of a high molecular weight I $\kappa$ B kinase (IKK) complex whose catalysis is generally carried out by three tightly associated IKK subunits.

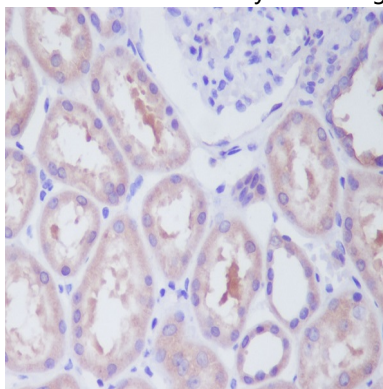
## Research Area

Signal Transduction

## Image Data



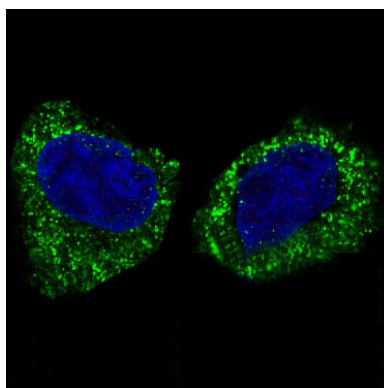
Western blot analysis of IKK beta in HeLa lysates using IKK beta antibody.



Immunohistochemistry analysis of paraffin-embedded Human kidney using IKK beta antibody. High-pressure and temperature Sodium Citrate pH 6.0 was used for antigen retrieval.

**Product Name: IKK beta Rabbit Polyclonal Antibody**  
**Catalog #: APRab01338**

---



Immunofluorescence analysis of IKK beta in HeLa using IKK beta antibody.

### **Note**

For research use only.