

Product Name: PKC delta Rabbit Polyclonal Antibody
Catalog #: APRab01337



Summary

Production Name	PKC delta Rabbit Polyclonal Antibody
Description	Rabbit Polyclonal Antibody
Host	Rabbit
Application	WB,IHC-P,ICC/IF
Reactivity	Human,Mouse,Rat

Performance

Conjugation	Unconjugated
Modification	Unmodified
Isotype	IgG
Clonality	Polyclonal
Form	Liquid
Storage	Store at 4°C short term. Aliquot and store at -20°C long term. Avoid freeze/thaw cycles.
Buffer	Rabbit IgG in phosphate buffered saline , pH 7.4, 150mM NaCl, 0.02% sodium azide and 50% glycerol.
Purification	Affinity Chromatography

Immunogen

Gene Name	PRKCD
Alternative Names	Protein kinase C delta type; Tyrosine-protein kinase PRKCD; nPKC-delta
Gene ID	5580
SwissProt ID	Q05655.

Application

Dilution Ratio	WB: 1:500-1:1000 IHC: 1:50-1:100 IF: 1:50-1:200
Molecular Weight	Calculated MW: 78 kDa; Observed MW: 78 kDa

Background

Protein kinase C (PKC) is a family of serine- and threonine-specific protein kinases that can be activated by calcium and the

Product Name: PKC delta Rabbit Polyclonal Antibody
Catalog #: APRab01337

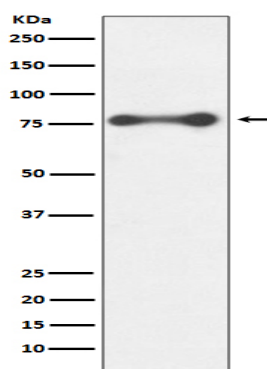


second messenger diacylglycerol. PKC family members phosphorylate a wide variety of protein targets and are known to be involved in diverse cellular signaling pathways.

Research Area

Signal Transduction

Image Data



Western blot analysis of PKC delta in HeLa lysates using PKC delta antibody.

Note

For research use only.