

Summary

Production Name	CD8 alpha Rabbit Polyclonal Antibody
Description	Rabbit Polyclonal Antibody
Host	Rabbit
Application	WB,IHC-P,ICC/IF
Reactivity	Human

Performance

Conjugation	Unconjugated
Modification	Unmodified
Isotype	IgG
Clonality	Polyclonal
Form	Liquid
Storage	Store at 4°C short term. Aliquot and store at -20°C long term. Avoid freeze/thaw cycles.
Buffer	Rabbit IgG in phosphate buffered saline , pH 7.4, 150mM NaCl, 0.02% sodium azide and 50% glycerol.
Purification	Affinity Chromatography

Immunogen

Gene Name	CD8A
Alternative Names	CD8A; MAL; T-cell surface glycoprotein CD8 alpha chain; T-lymphocyte differentiation antigen T8/Leu-2; CD antigen CD8a
Gene ID	925
SwissProt ID	P01732.

Application

Dilution Ratio	WB: 1:500-1:1000 IHC: 1:50-1:100 IF: 1:50-1:200
Molecular Weight	Calculated MW: 26 kDa; Observed MW: 32 kDa

Product Name: CD8 alpha Rabbit Polyclonal Antibody
Catalog #: APRab01333



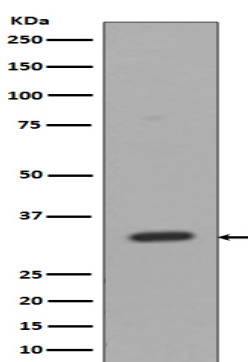
Background

Identifies cytotoxic/suppressor T-cells that interact with MHC class I bearing targets. CD8 is thought to play a role in the process of T-cell mediated killing. CD8 alpha chains binds to class I MHC molecules alpha-3 domains.

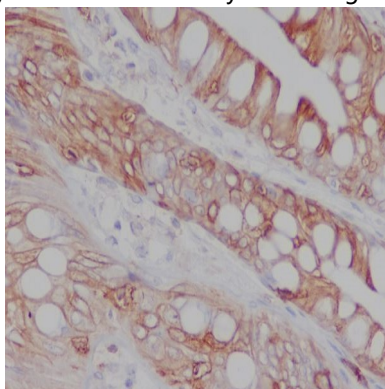
Research Area

Immunology

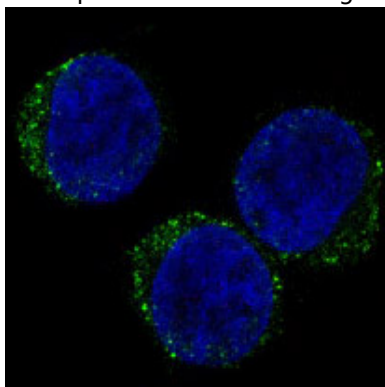
Image Data



Western blot analysis of CD8 in Jurkat lysates using CD8 alpha antibody.



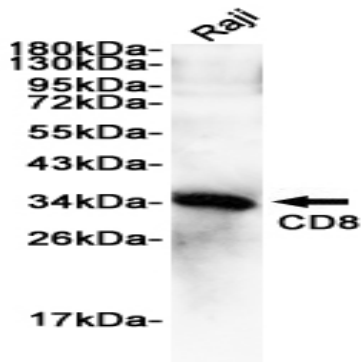
Immunohistochemistry analysis of paraffin-embedded Human colon using CD8 antibody. High-pressure and temperature Sodium Citrate pH 6.0 was used for antigen retrieval.



Product Name: CD8 alpha Rabbit Polyclonal Antibody
Catalog #: APRab01333



Immunofluorescence analysis of CD8 alpha in Jurkat using CD8 antibody.



Western blot analysis of CD8 alpha in Raji lysates using CD8 antibody.

Note

For research use only.