

Product Name: MMP12 Rabbit Polyclonal Antibody
Catalog #: APRab01328



Summary

Production Name	MMP12 Rabbit Polyclonal Antibody
Description	Rabbit Polyclonal Antibody
Host	Rabbit
Application	WB
Reactivity	Human

Performance

Conjugation	Unconjugated
Modification	Unmodified
Isotype	IgG
Clonality	Polyclonal
Form	Liquid
Storage	Store at 4°C short term. Aliquot and store at -20°C long term. Avoid freeze/thaw cycles.
Buffer	Rabbit IgG in phosphate buffered saline , pH 7.4, 150mM NaCl, 0.02% sodium azide and 50% glycerol.
Purification	Affinity Chromatography

Immunogen

Gene Name	MMP12
Alternative Names	Macrophage metalloelastase; MME; 3.4.24.65; Macrophage elastase; ME; hME; Matrix metalloproteinase-12; MMP-12; MMP12; HME
Gene ID	4321
SwissProt ID	P39900.

Application

Dilution Ratio	WB: 1:500-1:1000
Molecular Weight	Calculated MW: 54 kDa; Observed MW: 54,45,22 kDa

Background

Product Name: MMP12 Rabbit Polyclonal Antibody
Catalog #: APRab01328

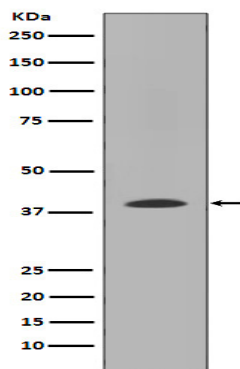


MMP-12 lacks a transmembrane domain and furin cleavage site. The zymogen for MMP-12 is about 54 kDa, and is quickly activated to the 45 kDa form, and this breaks down to cascade of active forms, ending with the common 22 kDa form. Stimulated macrophages produce MMP-12; it has also been found in osteosarcoma cells, synovial fibroblasts and lung fibroblasts.

Research Area

Cardiovascular

Image Data



Western blot analysis of MMP12 in WI38 lysates using MMP12 antibody.

Note

For research use only.