

## Summary

|                        |                                 |
|------------------------|---------------------------------|
| <b>Production Name</b> | MMP3 Rabbit Polyclonal Antibody |
| <b>Description</b>     | Rabbit Polyclonal Antibody      |
| <b>Host</b>            | Rabbit                          |
| <b>Application</b>     | WB,IHC-P,ICC/IF                 |
| <b>Reactivity</b>      | Human,Mouse,Rat                 |

## Performance

|                     |  |
|---------------------|--|
| <b>Conjugation</b>  | Unconjugated   |
| <b>Modification</b> | Unmodified   |
| <b>Isotype</b>      | IgG  |
| <b>Clonality</b>    | Polyclonal   |
| <b>Form</b>         | Liquid   |
| <b>Storage</b>      | Store at 4°C short term. Aliquot and store at -20°C long term. Avoid freeze/thaw cycles.           |
| <b>Buffer</b>       | Rabbit IgG in phosphate buffered saline , pH 7.4, 150mM NaCl, 0.02% sodium azide and 50% glycerol. |
| <b>Purification</b> | Affinity Chromatography  |

## Immunogen

|                          |  |
|--------------------------|--|
| <b>Gene Name</b>         | MMP3   |
| <b>Alternative Names</b> | MMP3; STMY1; Stromelysin-1; SL-1; Matrix metalloproteinase-3; MMP-3; Transin-1 |
| <b>Gene ID</b>           | 4314   |
| <b>SwissProt ID</b>      | P08254.  |

## Application

|                         |   |
|-------------------------|---|
| <b>Dilution Ratio</b>   | WB: 1:500-1:1000 IHC: 1:50-1:100 IF: 1:50-1:200 |
| <b>Molecular Weight</b> | Calculated MW: 54 kDa; Observed MW: 50 kDa      |

## Background

**Product Name: MMP3 Rabbit Polyclonal Antibody**  
**Catalog #: APRab01324**

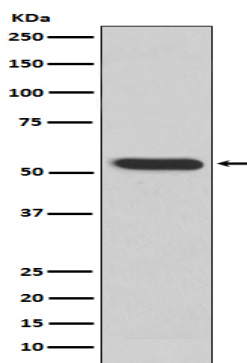


MMP3 Can degrade fibronectin, laminin, gelatins of type I, III, IV, and V; collagens III, IV, X, and IX, and cartilage proteoglycans. Activates procollagenase. Belongs to the peptidase M10A family.

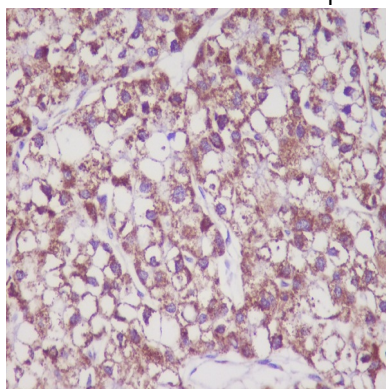
## Research Area

Cardiovascular

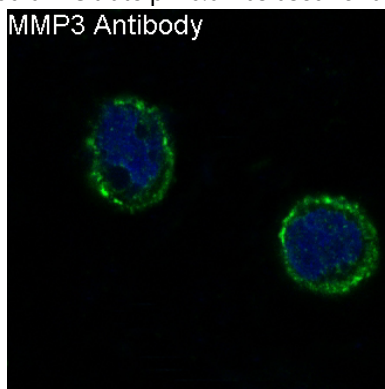
## Image Data



Western blot analysis of MMP3 in MMP3 recombinant protein using MMP3 antibody.



Immunohistochemistry analysis of paraffin-embedded Human liver cancer using MMP3 antibody. High-pressure and temperature Sodium Citrate pH 6.0 was used for antigen retrieval.



Immunofluorescence analysis of MMP3 in HeLa using MMP3 antibody.

**Product Name: MMP3 Rabbit Polyclonal Antibody**  
**Catalog #: APRab01324**

---



**Note**

For research use only.