

**Product Name: Phospho-Estrogen Receptor alpha
(Ser167) Rabbit Polyclonal Antibody**
Catalog #: APRab00948

Summary

Production Name	Phospho-Estrogen Receptor alpha (Ser167) Rabbit Polyclonal Antibody
Description	Rabbit Polyclonal Antibody
Host	Rabbit
Application	WB,IHC-P,ICC/IF
Reactivity	Human

Performance

Conjugation	Unconjugated
Modification	Phosphorylated
Isotype	IgG
Clonality	Polyclonal
Form	Liquid
Storage	Store at 4°C short term. Aliquot and store at -20°C long term. Avoid freeze/thaw cycles.
Buffer	Liquid in PBS containing 50% glycerol, 0.5% BSA and 0.02% sodium azide, pH 7.3.
Purification	Affinity Purification

Immunogen

Gene Name	ESR1
Alternative Names	ESR1; Era; Eralpha; Estrogen receptor; Estradiol receptor; ER-alpha; Estrogen receptor 1; NR3A1; ER; ESR; ESRA; Estrogen receptor alpha
Gene ID	2099
SwissProt ID	P03372.

Application

Dilution Ratio	WB: 1:500-1:1000 IHC: 1:50-1:100 ICC: 1:100-1:200
Molecular Weight	Calculated MW: 66 kDa; Observed MW: 66 kDa

Product Name: Phospho-Estrogen Receptor alpha (Ser167) Rabbit Polyclonal Antibody
Catalog #: APRab00948



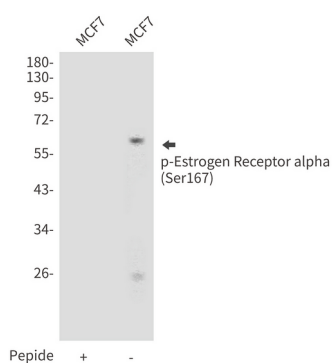
Background

ER (estrogen receptor 1) a member of the steroid receptor superfamily, contains highly conserved DNA binding (DBD) and ligand binding domains (LBD). Through its estrogen-independent and estrogen-dependent activation domains (AF-1 and AF-2, respectively), ER regulates transcription by recruiting coactivator proteins and interacting with general transcriptional machinery. Phosphorylation provides an important mechanism to regulate ER activity. ER is phosphorylated on multiple sites.

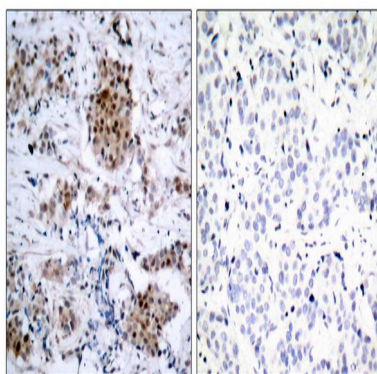
Research Area

Signal Transduction

Image Data

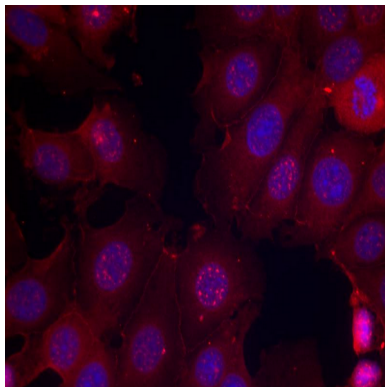


Western blot analysis of Phospho-Estrogen Receptor alpha (Ser167) in MCF-7 lysates using Phospho-Estrogen Receptor alpha (Ser167) antibody.



Immunohistochemistry analysis of paraffin-embedded Human breast carcinoma tissue using Estrogen Receptora(Phospho-Ser167) antibody. High-pressure and temperature Sodium Citrate pH 6.0 was used for antigen retrieval. Sample with blocking peptide on the right.

**Product Name: Phospho-Estrogen Receptor alpha
(Ser167) Rabbit Polyclonal Antibody**
Catalog #: APRab00948



Immunofluorescence analysis of Phospho-Estrogen Receptor alpha (Ser167) in MCF-7 cells using Estrogen Receptora(Phospho-Ser167) antibody(red).

Note

For research use only.