

**Product Name: Phospho-Estrogen Receptor alpha  
(Ser118) Rabbit Polyclonal Antibody**  
**Catalog #: APRab00947**

---

## Summary

<b>Production Name</b>	Phospho-Estrogen Receptor alpha (Ser118) Rabbit Polyclonal Antibody
<b>Description</b>	Rabbit Polyclonal Antibody
<b>Host</b>	Rabbit
<b>Application</b>	WB,IHC-P,ICC/IF
<b>Reactivity</b>	Human

## Performance

<b>Conjugation</b>	Unconjugated
<b>Modification</b>	Phosphorylated
<b>Isotype</b>	IgG
<b>Clonality</b>	Polyclonal
<b>Form</b>	Liquid
<b>Storage</b>	Store at 4°C short term. Aliquot and store at -20°C long term. Avoid freeze/thaw cycles.
<b>Buffer</b>	Liquid in PBS containing 50% glycerol, 0.5% BSA and 0.02% sodium azide, pH 7.3.
<b>Purification</b>	Affinity Purification

## Immunogen

<b>Gene Name</b>	ESR1
<b>Alternative Names</b>	ESR1; Era; Eralpha; Estrogen receptor; Estradiol receptor; ER-alpha; Estrogen receptor 1; NR3A1; ER; ESR; ESRA; Estrogen receptor alpha
<b>Gene ID</b>	2099
<b>SwissProt ID</b>	P03372.

## Application

<b>Dilution Ratio</b>	WB: 1:500-1:1000 IHC: 1:50-1:100 ICC: 1:100-1:200
<b>Molecular Weight</b>	Calculated MW: 66 kDa; Observed MW: 66 kDa

**Product Name: Phospho-Estrogen Receptor alpha (Ser118) Rabbit Polyclonal Antibody**  
**Catalog #: APRab00947**

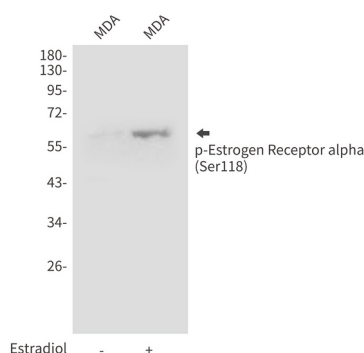
## Background

ER (estrogen receptor 1) a member of the steroid receptor superfamily, contains highly conserved DNA binding (DBD) and ligand binding domains (LBD). Through its estrogen-independent and estrogen-dependent activation domains (AF-1 and AF-2, respectively), ER regulates transcription by recruiting coactivator proteins and interacting with general transcriptional machinery. Phosphorylation provides an important mechanism to regulate ER activity. ER is phosphorylated on multiple sites.

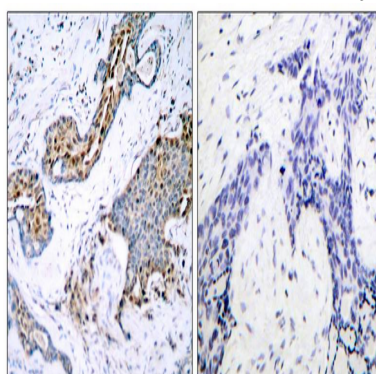
## Research Area

Signal Transduction

## Image Data



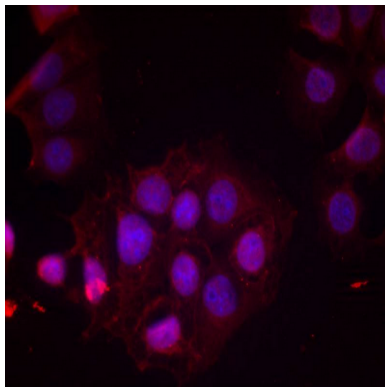
Western blot analysis of Phospho-Estrogen Receptor alpha (Ser118) in MDAMB435 lysates using Phospho-Estrogen Receptor alpha (Ser118) antibody.



Immunohistochemistry analysis of paraffin-embedded Human breast carcinoma tissue using Estrogen Receptora(Phospho-Ser118) antibody.High-pressure and temperature Sodium Citrate pH 6.0 was used for antigen retrieval. Sample with blocking peptide on the right.

**Product Name: Phospho-Estrogen Receptor alpha  
(Ser118) Rabbit Polyclonal Antibody**  
**Catalog #: APRab00947**

---



Immunofluorescence analysis of Phospho-Estrogen Receptor alpha (Ser118) in MCF-7 cells using Estrogen Receptora(Phospho-Ser118) antibody(red).

### **Note**

For research use only.