

**Product Name: Phospho-EDG1 (Thr236) Rabbit Polyclonal Antibody**  
**Catalog #: APRab00946**

---

## Summary

<b>Production Name</b>	Phospho-EDG1 (Thr236) Rabbit Polyclonal Antibody
<b>Description</b>	Rabbit Polyclonal Antibody
<b>Host</b>	Rabbit
<b>Application</b>	WB, ICC/IF, ELISA
<b>Reactivity</b>	Human, Mouse, Rat

## Performance

<b>Conjugation</b>	Unconjugated
<b>Modification</b>	Phosphorylated
<b>Isotype</b>	IgG
<b>Clonality</b>	Polyclonal
<b>Form</b>	Liquid
<b>Storage</b>	Store at 4°C short term. Aliquot and store at -20°C long term. Avoid freeze/thaw cycles.
<b>Buffer</b>	Liquid in PBS containing 50% glycerol, 0.5% BSA and 0.02% sodium azide, pH 7.3.
<b>Purification</b>	Affinity Purification

## Immunogen

<b>Gene Name</b>	S1PR1 S1PR1; CHEDG1; EDG1; Sphingosine 1-phosphate receptor 1; S1P receptor 1; S1P1;
<b>Alternative Names</b>	Endothelial differentiation G-protein coupled receptor 1; Sphingosine 1-phosphate receptor Edg-1; S1P receptor Edg-1; CD antigen CD363
<b>Gene ID</b>	1901
<b>SwissProt ID</b>	P21453.

## Application

<b>Dilution Ratio</b>	WB: 1:500-1:1000 ICC: 1:100-1:200 ELISA: 1:10000
<b>Molecular Weight</b>	Calculated MW: 43 kDa; Observed MW: 42 kDa

**Product Name: Phospho-EDG1 (Thr236) Rabbit  
Polyclonal Antibody  
Catalog #: AP Rab00946**



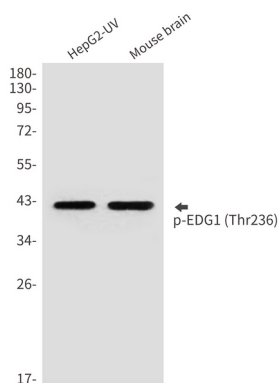
## Background

Receptor for the lysosphingolipid sphingosine 1-phosphate (S1P). S1P is a bioactive lysophospholipid that elicits diverse physiological effect on most types of cells and tissues. This inducible epithelial cell G-protein-coupled receptor may be involved in the processes that regulate the differentiation of endothelial cells.

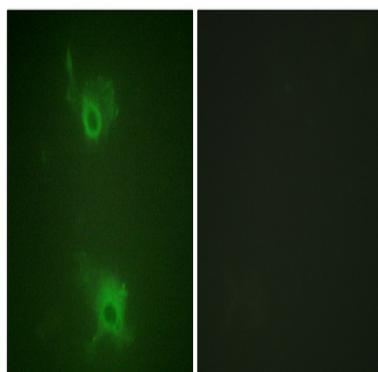
## Research Area

Cell Biology

## Image Data



Western blot analysis of Phospho-EDG1 (Thr236) in HepG2, mouse brain lysates using Phospho-EDG1 (Thr236) antibody.



Immunofluorescence analysis of Phospho-EDG1 (Thr236) in COS7 using Phospho-EDG1 (Thr236) antibody. The picture on the right is blocked using the Phospho-peptide.

## Note

For research use only.