

**Product Name: Phospho-HDAC6 (Ser22) Rabbit Polyclonal Antibody**  
**Catalog #: APRab00938**

---

## Summary

<b>Production Name</b>	Phospho-HDAC6 (Ser22) Rabbit Polyclonal Antibody
<b>Description</b>	Rabbit Polyclonal Antibody
<b>Host</b>	Rabbit
<b>Application</b>	WB
<b>Reactivity</b>	Human, Mouse

## Performance

<b>Conjugation</b>	Unconjugated
<b>Modification</b>	Phosphorylated
<b>Isotype</b>	IgG
<b>Clonality</b>	Polyclonal
<b>Form</b>	Liquid
<b>Storage</b>	Store at 4°C short term. Aliquot and store at -20°C long term. Avoid freeze/thaw cycles.
<b>Buffer</b>	Liquid in PBS containing 50% glycerol, 0.5% BSA and 0.02% sodium azide, pH 7.3.
<b>Purification</b>	Affinity Purification

## Immunogen

<b>Gene Name</b>	HDAC6
<b>Alternative Names</b>	HDAC6; KIAA0901; JM21; Histone deacetylase 6; HD6
<b>Gene ID</b>	10013
<b>SwissProt ID</b>	Q9UBN7.

## Application

<b>Dilution Ratio</b>	WB: 1:500-1:1000
<b>Molecular Weight</b>	Calculated MW: 131 kDa; Observed MW: 131 kDa

## Background

Involved in the regulation of many cellular processes, including cell migration, immune synapse formation, viral infection,

**Product Name: Phospho-HDAC6 (Ser22) Rabbit Polyclonal Antibody**  
**Catalog #: APRab00938**

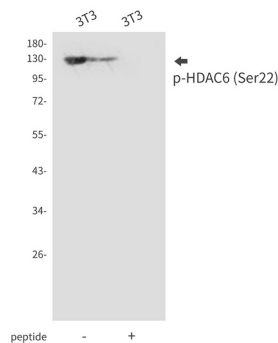
---

and degradation of misfolded proteins. HDAC6 binds to both poly-ubiquitinated misfolded proteins and dynein motors, facilitating the transport of misfolded proteins to the aggresome. Required for subsequent recruitment of the autophagic machinery and clearance of aggresomes from the cell. Plays a key role in the protection against the deleterious effects of pathological protein aggregation that occurs in various diseases.

## Research Area

Epigenetics and Nuclear Signaling

## Image Data



Western blot analysis of Phospho-HDAC6 (Ser22) in 3T3 lysates using Phospho-HDAC6 (Ser22) antibody.

## Note

For research use only.