

Product Name: Phospho-CDC25C (Ser198) Rabbit Polyclonal Antibody
Catalog #: APRab00912

Summary

Production Name	Phospho-CDC25C (Ser198) Rabbit Polyclonal Antibody
Description	Rabbit Polyclonal Antibody
Host	Rabbit
Application	IHC-P
Reactivity	Human

Performance

Conjugation	Unconjugated
Modification	Phosphorylated
Isotype	IgG
Clonality	Polyclonal
Form	Liquid
Storage	Store at 4°C short term. Aliquot and store at -20°C long term. Avoid freeze/thaw cycles.
Buffer	Liquid in PBS containing 50% glycerol, 0.5% BSA and 0.02% sodium azide, pH 7.3.
Purification	Affinity Purification

Immunogen

Gene Name	CDC25C
Alternative Names	CDC25C; M-phase inducer phosphatase 3; Dual specificity phosphatase Cdc25C
Gene ID	995
SwissProt ID	P30307.

Application

Dilution Ratio	IHC: 1:50-1:100
Molecular Weight	-

Background

Functions as a dosage-dependent inducer in mitotic control. It is a tyrosine protein phosphatase required for progression

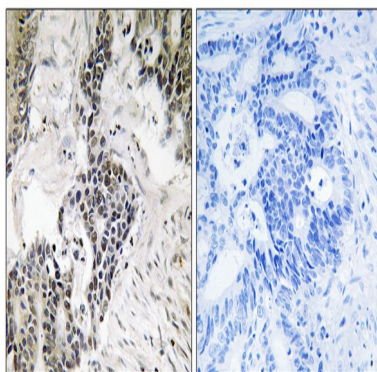
**Product Name: Phospho-CDC25C (Ser198) Rabbit
Polyclonal Antibody
Catalog #: APRab00912**

of the cell cycle. It directly dephosphorylates CDK1 and activate its kinase activity.

Research Area

Cell Biology

Image Data



Immunohistochemistry analysis of paraffin-embedded Human colon carcinoma tissue using Phospho-CDC25C (Ser198) antibody. High-pressure and temperature Sodium Citrate pH 6.0 was used for antigen retrieval. Sample with blocking peptide on the right.

Note

For research use only.