

Product Name: Human kappa Light Chain Rabbit Polyclonal Antibody
Catalog #: APRab00904

Summary

Production Name	Human kappa Light Chain Rabbit Polyclonal Antibody
Description	Rabbit Polyclonal Antibody
Host	Rabbit
Application	WB,ELISA
Reactivity	Human

Performance

Conjugation	Unconjugated
Modification	Unmodified
Isotype	IgG
Clonality	Polyclonal
Form	Liquid
Storage	Store at 4°C short term. Aliquot and store at -20°C long term. Avoid freeze/thaw cycles.
Buffer	Liquid in PBS containing 50% glycerol, 0.5% BSA and 0.02% sodium azide, pH 7.3.
Purification	Affinity Purification

Immunogen

Gene Name	IGKC
Alternative Names	HCAK1; Ig kappa chain C region; IGKC; IMMUNOGLOBULIN InV; Km
Gene ID	3514.0
SwissProt ID	P01834.

Application

Dilution Ratio	WB: 1:500-1:1000 ELISA: 1:10000
Molecular Weight	Calculated MW: 12 kDa; Observed MW: 25 kDa

Background

**Product Name: Human kappa Light Chain Rabbit
Polyclonal Antibody**
Catalog #: APRab00904

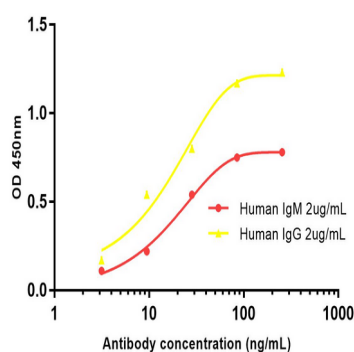


Constant region of immunoglobulin light chains. Immunoglobulins, also known as antibodies, are membrane-bound or secreted glycoproteins produced by B lymphocytes. In the recognition phase of humoral immunity, the membrane-bound immunoglobulins serve as receptors which, upon binding of a specific antigen, trigger the clonal expansion and differentiation of B lymphocytes into immunoglobulins-secreting plasma cells.

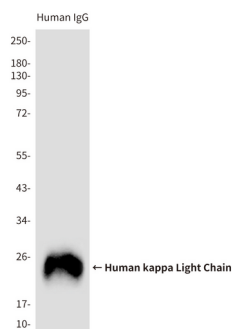
Research Area

Immunology

Image Data



Indirect ELISA assay for Rabbit Human kappa light chain antibody. Antigen coating concentration: 2ug/ml.



Western blot analysis of Human kappa Light Chain in total Human IgG reduced and denatured in 2X SDS loading buffer with DTT using Human kappa Light Chain antibody

Note

For research use only.