

Product Name: Phospho-IKK beta (Tyr188) Rabbit Polyclonal Antibody
Catalog #: APRab00838

Summary

Production Name	Phospho-IKK beta (Tyr188) Rabbit Polyclonal Antibody
Description	Rabbit Polyclonal Antibody
Host	Rabbit
Application	WB,IHC-P,ELISA
Reactivity	Human,Mouse,Rat,Monkey

Performance

Conjugation	Unconjugated
Modification	Phosphorylated
Isotype	IgG
Clonality	Polyclonal
Form	Liquid
Storage	Store at 4°C short term. Aliquot and store at -20°C long term. Avoid freeze/thaw cycles.
Buffer	Liquid in PBS containing 50% glycerol, 0.5% BSA and 0.02% sodium azide, pH 7.3.
Purification	Affinity Chromatography

Immunogen

Gene Name	IKBKB IKBKB; IKKB; Inhibitor of nuclear factor kappa-B kinase subunit beta; I-kappa-B-kinase
Alternative Names	beta; IKK-B; IKK-beta; IkbKB; I-kappa-B kinase 2; IKK2; Nuclear factor NF-kappa-B inhibitor kinase beta; NFKBIKB
Gene ID	3551
SwissProt ID	O14920.

Application

Dilution Ratio	WB: 1:500-1:1000 IHC: 1:50-1:100 ELISA: 1:10000
Molecular Weight	Calculated MW: 87 kDa; Observed MW: 87 kDa

Product Name: Phospho-IKK beta (Tyr188) Rabbit Polyclonal Antibody
Catalog #: APRab00838



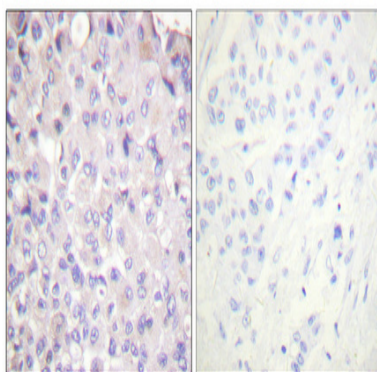
Background

The NF- κ B/Rel transcription factors are present in the cytosol in an inactive state, complexed with the inhibitory I κ B proteins (1-3). Most agents that activate NF- κ B do so through a common pathway based on phosphorylation-induced, proteasome-mediated degradation of I κ B (3-7). The key regulatory step in this pathway involves activation of a high molecular weight I κ B kinase (IKK) complex whose catalysis is generally carried out by three tightly associated IKK subunits.

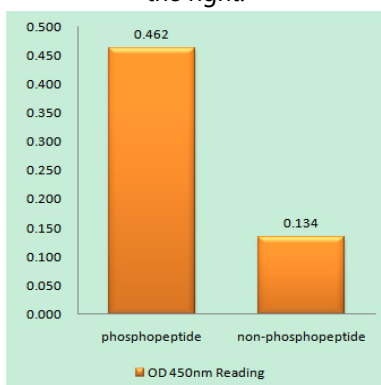
Research Area

Signal Transduction

Image Data

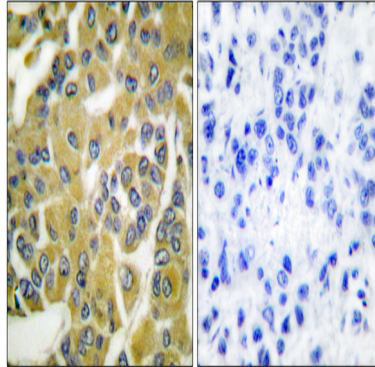


Immunohistochemistry analysis of paraffin-embedded Human breast cancer using Phospho-IKK beta (Tyr188) antibody. High-pressure and temperature Tris-EDTA pH 8.0 was used for antigen retrieval. Sample with blocking peptide on the right.

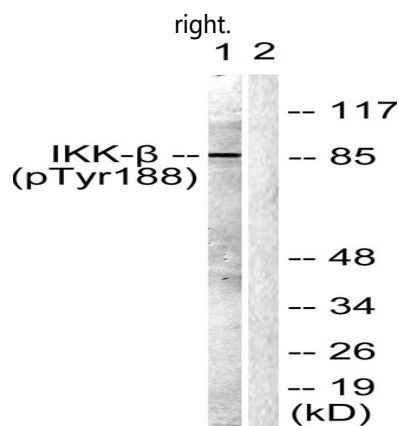


EnzymeLinked Immunosorbent Assay (Phospho-ELISA) for Immunogen Phospho-peptide (Phospho-left) and NonPhospho-peptide (Phospho-right), using IKKbeta (Phospho-Tyr18antibody

Product Name: Phospho-IKK beta (Tyr188) Rabbit Polyclonal Antibody
Catalog #: APRab00838



Immunohistochemistry analysis of paraffin-embedded Human breast carcinoma using Phospho-IKK beta (Tyr188) antibody. High-pressure and temperature Sodium Citrate pH 6.0 was used for antigen retrieval. Sample with blocking peptide on the



Western blot analysis of Phospho-IKK beta (Tyr188) in COS7 lysates using Phospho-IKK beta (Tyr188) antibody. The lane on the right is blocked with the synthesized peptide.

Note

For research use only.