

Product Name: Cleaved-Caspase 6 p18 Rabbit Polyclonal Antibody
Catalog #: APRab00828

Summary

Production Name	Cleaved-Caspase 6 p18 Rabbit Polyclonal Antibody
Description	Rabbit Polyclonal Antibody
Host	Rabbit
Application	WB,IHC-P,ELISA
Reactivity	Human,Rat

Performance

Conjugation	Unconjugated
Modification	Cleaved
Isotype	IgG
Clonality	Polyclonal
Form	Liquid
Storage	Store at 4°C short term. Aliquot and store at -20°C long term. Avoid freeze/thaw cycles.
Buffer	Liquid in PBS containing 50% glycerol, 0.5% BSA and 0.02% sodium azide, pH 7.3.
Purification	Affinity Chromatography

Immunogen

Gene Name	CASP6
Alternative Names	CASP6; MCH2; Caspase-6; CASP-6; Apoptotic protease Mch-2
Gene ID	839
SwissProt ID	P55212.

Application

Dilution Ratio	WB: 1:500-1:1000 IHC: 1:50-1:100 ELISA: 1:10000
Molecular Weight	Calculated MW: 33 kDa; Observed MW: 20,35 kDa

Background

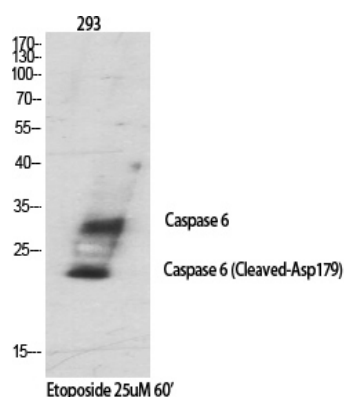
Product Name: Cleaved-Caspase 6 p18 Rabbit Polyclonal Antibody
Catalog #: APRab00828

Caspase-6 (Mch2) is one of the major executioner caspases functioning in cellular apoptotic processes. Upon apoptotic stimulation, initiator caspases such as caspase-9 are cleaved and activated. The activated upstream caspases further process downstream executioner caspases, such as caspase-3 and caspase-6, by cleaving them into large and small subunits, thereby initiating a caspase cascade leading to apoptosis. One of the major targets for caspase-6 is the membrane associated protein lamin A.

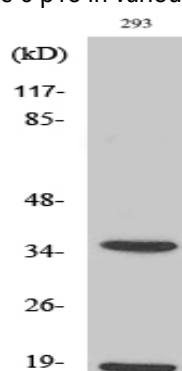
Research Area

Cell Biology

Image Data

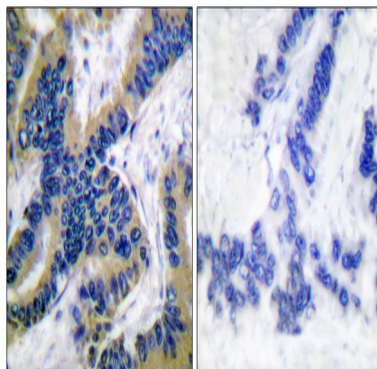


Western blot analysis of Cleaved-Caspase 6 p18 in various lysates using Cleaved-Caspase 6 p18 antibody.



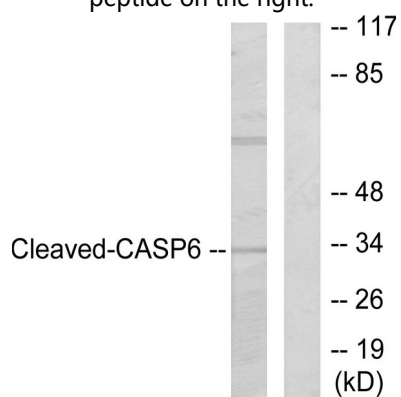
Western blot analysis of Cleaved-Caspase 6 p18 in 293 lysates using Cleaved-Caspase6 p18 (D179) antibody.

Product Name: Cleaved-Caspase 6 p18 Rabbit Polyclonal Antibody
Catalog #: APRab00828



Immunohistochemistry analysis of paraffin-embedded Human lung carcinoma tissue using Caspase 6 (Cleaved-Asp16, 2) antibody. High-pressure and temperature Sodium Citrate pH 6.0 was used for antigen retrieval. Sample with blocking

peptide on the right.



Western blot analysis of Cleaved-Caspase 6 p18 in 293 lysates treated with Etoposide using Cleaved-Caspase 6 p18 antibody. The lane on the right is blocked with the synthesized peptide.

Note

For research use only.