

**Product Name: Collagen XIII alpha 1 Rabbit Polyclonal Antibody**  
**Catalog #: APRab00808**

---



## Summary

<b>Production Name</b>	Collagen XIII alpha 1 Rabbit Polyclonal Antibody
<b>Description</b>	Rabbit Polyclonal Antibody
<b>Host</b>	Rabbit
<b>Application</b>	WB,ELISA
<b>Reactivity</b>	Human,Mouse

## Performance

<b>Conjugation</b>	Unconjugated
<b>Modification</b>	Unmodified
<b>Isotype</b>	IgG
<b>Clonality</b>	Polyclonal
<b>Form</b>	Liquid
<b>Storage</b>	Store at 4°C short term. Aliquot and store at -20°C long term. Avoid freeze/thaw cycles.
<b>Buffer</b>	Liquid in PBS containing 50% glycerol, 0.5% BSA and 0.02% sodium azide, pH 7.3.
<b>Purification</b>	Affinity Purification

## Immunogen

<b>Gene Name</b>	COL13A1
<b>Alternative Names</b>	Collagen alpha-1(XIII) chain (COLXIII A1)
<b>Gene ID</b>	1305
<b>SwissProt ID</b>	Q5TAT6.

## Application

<b>Dilution Ratio</b>	WB: 1:500-1:1000 ELISA: 1:10000
<b>Molecular Weight</b>	Calculated MW: 70 kDa; Observed MW: 70 kDa

## Background

Involved in cell-matrix and cell-cell adhesion interactions that are required for normal development.

**Product Name: Collagen XIII alpha 1 Rabbit Polyclonal  
Antibody**  
**Catalog #: APRab00808**

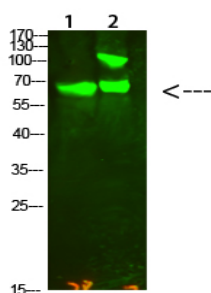
---



## Research Area

Cell Biology

## Image Data



Western blot analysis of Collagen XIII alpha 1 in HeLa, mouse kidney lysates using Collagen XIII alpha 1 antibody.

## Note

For research use only.