

**Product Name: GCM2 Rabbit Polyclonal Antibody**  
**Catalog #: APRab00805**



## Summary

<b>Production Name</b>	GCM2 Rabbit Polyclonal Antibody
<b>Description</b>	Rabbit Polyclonal Antibody
<b>Host</b>	Rabbit
<b>Application</b>	WB,ELISA
<b>Reactivity</b>	Human,Mouse,Rat

## Performance

<b>Conjugation</b>	Unconjugated
<b>Modification</b>	Unmodified
<b>Isotype</b>	IgG
<b>Clonality</b>	Polyclonal
<b>Form</b>	Liquid
<b>Storage</b>	Store at 4°C short term. Aliquot and store at -20°C long term. Avoid freeze/thaw cycles.
<b>Buffer</b>	Liquid in PBS containing 50% glycerol, 0.5% BSA and 0.02% sodium azide, pH 7.3.
<b>Purification</b>	Affinity Purification

## Immunogen

<b>Gene Name</b>	GCM2
<b>Alternative Names</b>	Chorion-specific transcription factor GCMb (hGCMb; GCM motif protein 2; Glial cells missing homolog 2)
<b>Gene ID</b>	9247
<b>SwissProt ID</b>	O75603.

## Application

<b>Dilution Ratio</b>	WB: 1:500-1:1000 ELISA: 1:10000
<b>Molecular Weight</b>	Calculated MW: 57 kDa; Observed MW: 57 kDa

## Background

Transcription factor that binds specific sequences on gene promoters and activate their transcription.

**Product Name: GCM2 Rabbit Polyclonal Antibody**  
**Catalog #: APRab00805**

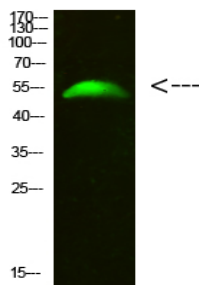
---



## Research Area

Stem Cells

## Image Data



Western blot analysis of GCM2 in 293T lysates using GCM2 antibody.

## Note

For research use only.