

Product Name: LEFTY Rabbit Polyclonal Antibody
Catalog #: APRab00796



Summary

Production Name	LEFTY Rabbit Polyclonal Antibody
Description	Rabbit Polyclonal Antibody
Host	Rabbit
Application	WB,ELISA
Reactivity	Human,Mouse

Performance

Conjugation	Unconjugated
Modification	Unmodified
Isotype	IgG
Clonality	Polyclonal
Form	Liquid
Storage	Store at 4°C short term. Aliquot and store at -20°C long term. Avoid freeze/thaw cycles.
Buffer	Liquid in PBS containing 50% glycerol, 0.5% BSA and 0.02% sodium azide, pH 7.3.
Purification	Affinity Purification

Immunogen

Gene Name	LEFTY1/LEFTY2 LEFTY1; LEFTB; LEFTYB; Left-right determination factor 1; Left-right determination factor B; Protein lefty-1; Protein lefty-B; LEFTY2; EBAF; LEFTA; LEFTYA; TGFB4; PSEC0024;
Alternative Names	Left-right determination factor 2; Endometrial bleeding-associated factor; Left-right determination factor A; Protein lefty-2; Protein lefty-A; Transforming growth factor beta-4; TGF-beta-4
Gene ID	10637/7044
SwissProt ID	O75610/O00292.

Application

Dilution Ratio	WB: 1:500-1:1000 ELISA: 1:10000
Molecular Weight	Calculated MW: 41 kDa; Observed MW: 41 kDa

Product Name: LEFTY Rabbit Polyclonal Antibody
Catalog #: APRab00796



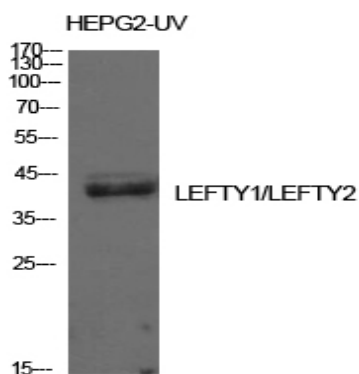
Background

Required for left-right axis determination as a regulator of LEFTY2 and NODAL.

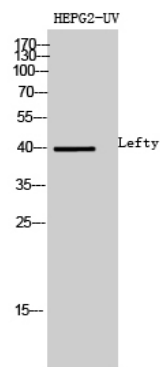
Research Area

Stem Cells

Image Data



Western blot analysis of LEFTY in HepG2UV lysates using LEFTY antibody.



Western blot analysis of LEFTY in HEPG2UV lysates using Lefty antibody.

Note

For research use only.